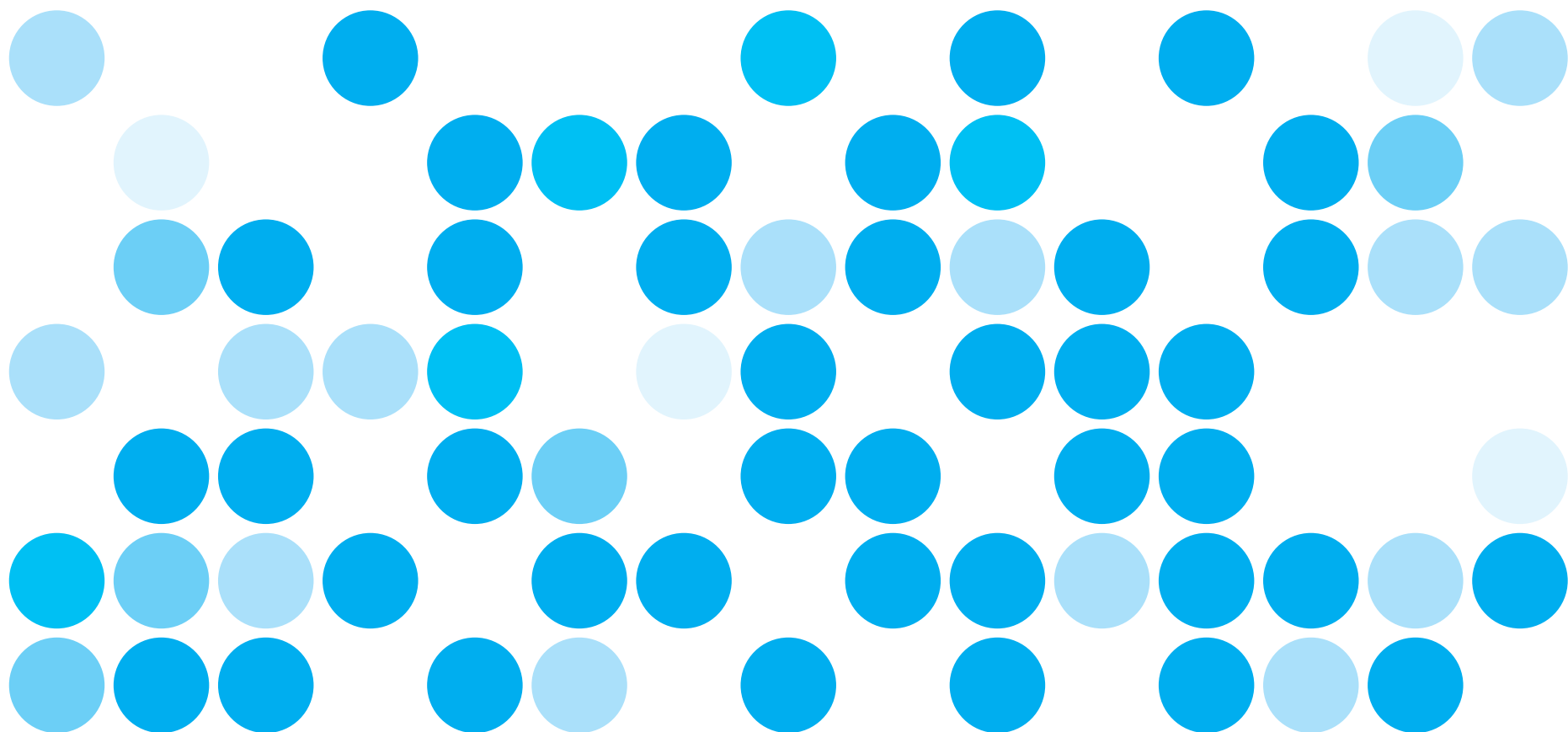


FINANCIAL FACT BOOK 2007

フィナンシャル ファクトブック 2007

OMRON

Sensing tomorrow™



CONTENTS

目次

Sales Data		売上
Net Sales	1	売上高
Sales Composition	2	部門別売上高構成
Sales by Region	3	地域別売上高構成
Profit Data		利益
Cost Composition & Operating Income / Net Sales	4	費用構成, 売上高営業利益率
Gross Profit Margin		売上総利益率
SG & A Expenses / Net Sales, R & D Expenses / Net Sales	5	売上高販売管理費比率, 売上高研究開発費比率
Income Before Tax/Net Sales, Net Income / Net Sales		売上高税引前純利益率, 売上高当期純利益率
Net Sales & Net Income per Employee	6	従業員1人当り売上高, 当期純利益
Interest Expenses & Interest Coverage		支払利息, インタレスト カバレッジ
Earnings per Share & Price-Earnings Ratio	7	1株当り利益, 株価収益率
Financial Statement Related Ratio		財務諸表に関する指標
Current Ratio & Working Capital	8	流動比率, 運転資本
Total Assets Turnover		総資産回転率
Inventory Turnover	9	たな卸資産回転率
Tangible Fixed Assets Turnover		有形固定資産回転率
Return on Tangible Fixed Assets	10	有形固定資産当期純利益率
Capital Expenditures & Cash Flows		設備投資額, キャッシュ・フロー
Return on Shareholders' Equity	11	株主資本当期純利益率 (ROE)
Return on Assets		総資産税引前純利益率 (ROA)
Shareholders' Equity / Total Assets	12	株主資本比率
Aggregate market value & Price Book-value Ratio		時価総額, 株価純資産倍率 (PBR)
Cash Flows per Share	13	1株当りキャッシュ・フロー
Financial Statement		財務諸表
Consolidated Statements of Operations	14	連結損益計算書
Consolidated Balance Sheets	15.16	連結貸借対照表
Consolidated Statements of Cash Flows	17	連結キャッシュ・フロー計算書
Basic Information		概要
Main Products	18	主要製品
Common Stock Price Range	19	株価推移
Corporate Organization Chart	20	組織図
Corporate Data	21	会社概要

Notes:

1. Figures have been calculated on a consolidated basis for the years ended March 31.
2. Not all data have been audited. Refer to respective annual reports for audited figures.
3. Data might be revised according to alterations to accounting standards.

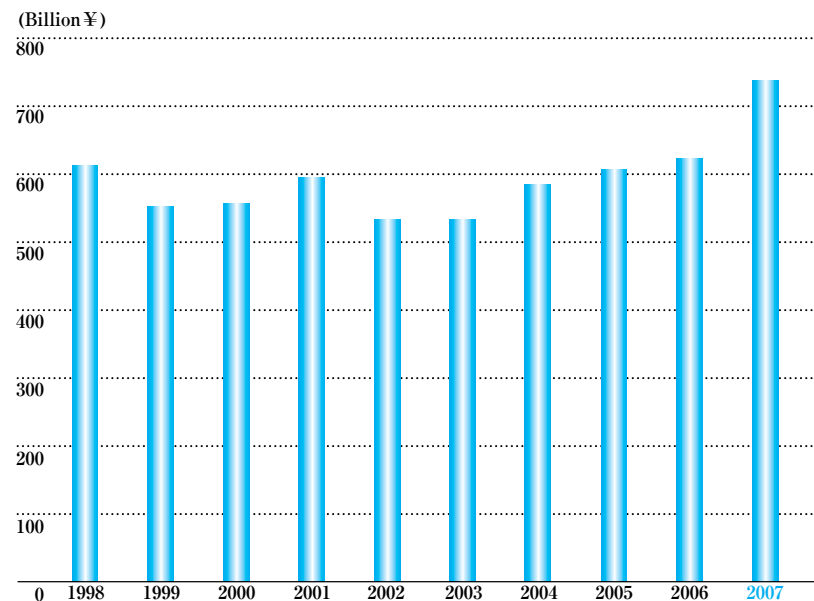
注:

1. 記載されている数値は連結ベース。会計年度は4月1日～3月31日です。
2. 監査されていないデータもあります。監査された数値に関しては、アニュアル・レポートを参照下さい。
3. 会計制度の変更等により過去に遡って数値の修正を行うことがあります。

Net Sales

売上高

Net Sales
売上高

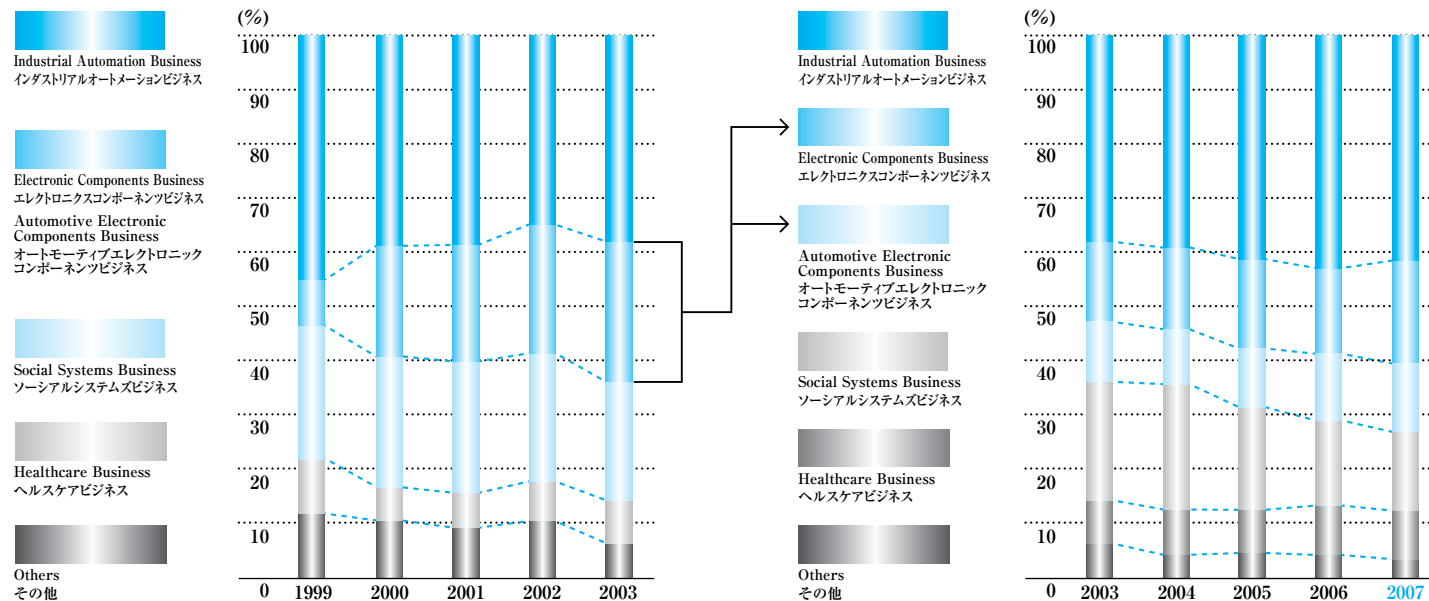


Net Sales 売上高

Fiscal Year ended March 31	～年3月期	1998	1999	2000	2001	2002	2003	2004	2005	2006	2007	
Net Sales	売上高	(Million ¥)	611,795	555,280	555,358	594,259	533,964	535,073	584,889	608,588	626,782	736,651
Annual Change	前年比	(%)	+3.0	-9.2	±0.0	+7.0	-10.1	+0.2	+9.3	+4.1	+3.0	+17.5

Sales Composition

部門別売上高構成



Sales Composition 部門別売上高構成

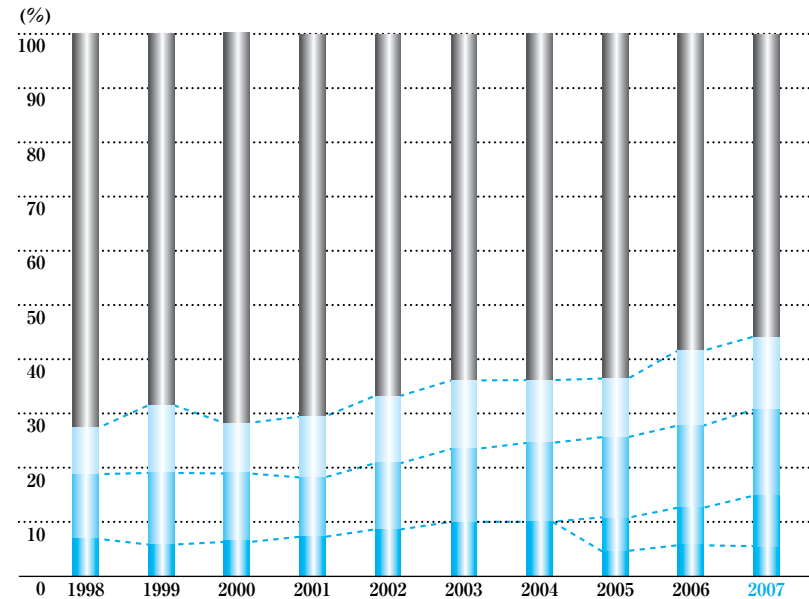
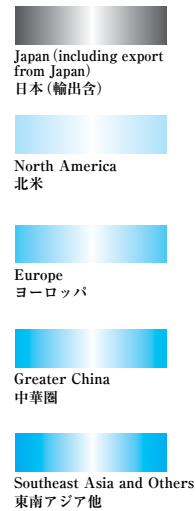
		1999	2000	2001	2002	2003			2003	2004	2005	2006	2007	
Industrial Automation Business インダストリアルオートメーションビジネス	(Million ¥) (%)	245,785 (44.3)	215,087 (38.7)	227,691 (38.3)	186,984 (35.0)	202,518 (37.8)	→	Industrial Automation Business インダストリアルオートメーションビジネス	(Million ¥) (%)	202,518 (37.8)	229,638 (39.3)	250,329 (41.1)	272,657 (43.5)	305,568 (41.5)
Electronic Components Business エレクトロニクスコンポーネツビジネス	(Million ¥) (%)	56,673 (10.2)	109,661 (19.7)	129,444 (21.8)	128,193 (24.0)	138,845 (25.9)	→	Electronic Components Business エレクトロニクスコンポーネツビジネス	(Million ¥) (%)	79,365 (14.8)	88,988 (15.2)	101,127 (16.6)	97,699 (15.6)	138,352 (18.8)
Social Systems Business ソーシャルシステムズビジネス	(Million ¥) (%)	135,872 (24.5)	128,534 (23.1)	141,928 (23.9)	124,627 (23.3)	116,652 (21.8)	→	Automotive Electronic Components Business オートモーティブエレクトロニクスコンポーネツビジネス	(Million ¥) (%)	59,480 (11.1)	58,824 (10.1)	64,558 (10.6)	77,593 (12.4)	93,321 (12.7)
Healthcare Business ヘルスケアビジネス	(Million ¥) (%)	43,729 (7.9)	42,640 (7.7)	39,327 (6.6)	40,617 (7.6)	42,331 (7.9)	→	Social Systems Business ソーシャルシステムズビジネス	(Million ¥) (%)	116,652 (21.8)	135,997 (23.3)	115,205 (18.9)	91,804 (14.6)	105,944 (14.4)
Others その他	(Million ¥) (%)	73,221 (13.2)	59,436 (10.7)	55,869 (9.4)	53,543 (10.0)	34,727 (6.5)	→	Healthcare Business ヘルスケアビジネス	(Million ¥) (%)	42,331 (7.9)	46,962 (8.0)	50,583 (8.3)	61,090 (9.7)	65,726 (8.9)
Total 合計	(Million ¥) (%)	555,280 (100.0)	555,358 (100.0)	594,259 (100.0)	533,964 (100.0)	535,073 (100.0)		Others その他	(Million ¥) (%)	34,727 (6.5)	24,480 (4.2)	26,786 (4.5)	25,939 (4.2)	27,740 (3.8)
								Total 合計	(Million ¥) (%)	535,073 (100.0)	584,889 (100.0)	608,588 (100.0)	626,782 (100.0)	736,651 (100.0)

※：OMRON Introduced the internal company system in April 1999.

※：99/4から社内カンパニー制を導入しています。

Sales by Region

地域別売上高構成



Sales by Region 地域別売上高構成

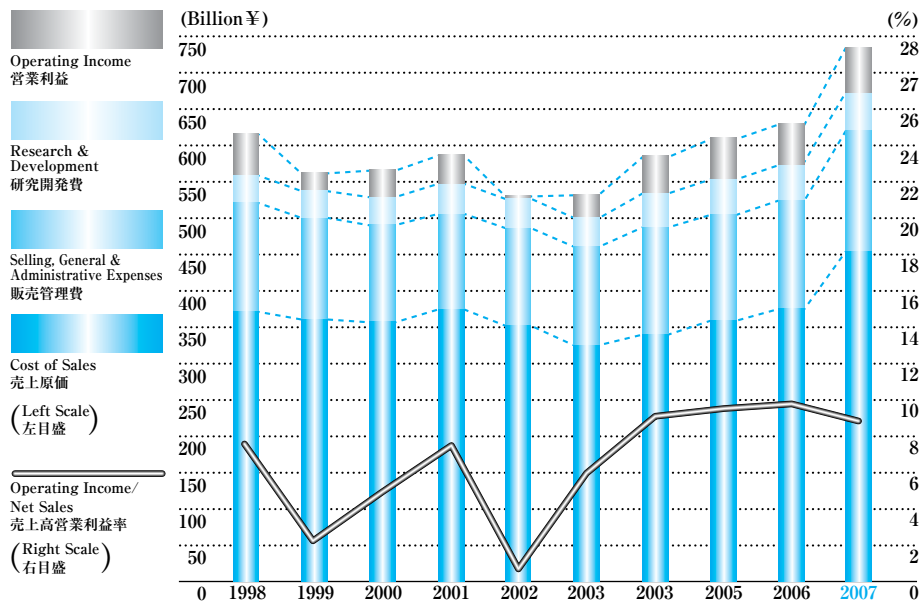
Fiscal Year ended March 31	～年3月期		1998	1999	2000	2001	2002	2003	2004	2005	2006	2007
Japan ※	(Million ¥)		440,614	387,734	397,236	423,825	357,868	340,575	376,349	387,627	370,666	412,142
日本	(%)		(72.0)	(69.8)	(71.5)	(71.3)	(67.0)	(63.7)	(64.3)	(63.7)	(59.1)	(55.9)
North America	(Million ¥)		61,169	58,233	59,474	64,373	65,559	67,886	64,613	65,612	79,686	97,989
北米	(%)		(10.0)	(10.5)	(10.7)	(10.8)	(12.3)	(12.7)	(11.0)	(10.8)	(12.7)	(13.3)
Europe	(Million ¥)		73,901	77,218	61,297	61,038	65,305	73,513	84,286	92,239	98,957	116,352
ヨーロッパ	(%)		(12.1)	(13.9)	(11.0)	(10.3)	(12.2)	(13.7)	(14.4)	(15.2)	(15.8)	(15.8)
Greater China	(Million ¥)		—	—	—	—	—	—	—	33,868	41,728	69,435
中華圏	(%)		—	—	—	—	—	—	—	(5.6)	(6.7)	(9.4)
Southeast Asia and Others	(Million ¥)		36,111	32,095	37,351	45,023	45,232	53,099	59,641	29,242	35,745	40,733
東南アジア他	(%)		(5.9)	(5.8)	(6.7)	(7.6)	(8.5)	(9.9)	(10.2)	(4.8)	(5.7)	(5.5)
Total	(Million ¥)		611,795	555,280	555,358	594,259	533,964	535,073	584,889	608,588	626,782	736,651
合計	(%)		(100.0)	(100.0)	(100.0)	(100.0)	(100.0)	(100.0)	(100.0)	(100.0)	(100.0)	(100.0)

※ : Export sales from Japan directly to overseas customers are included in the sales figures for Japan.

※ : 海外売上高のうち、日本からの輸出は上の「日本」の中に含まれます。

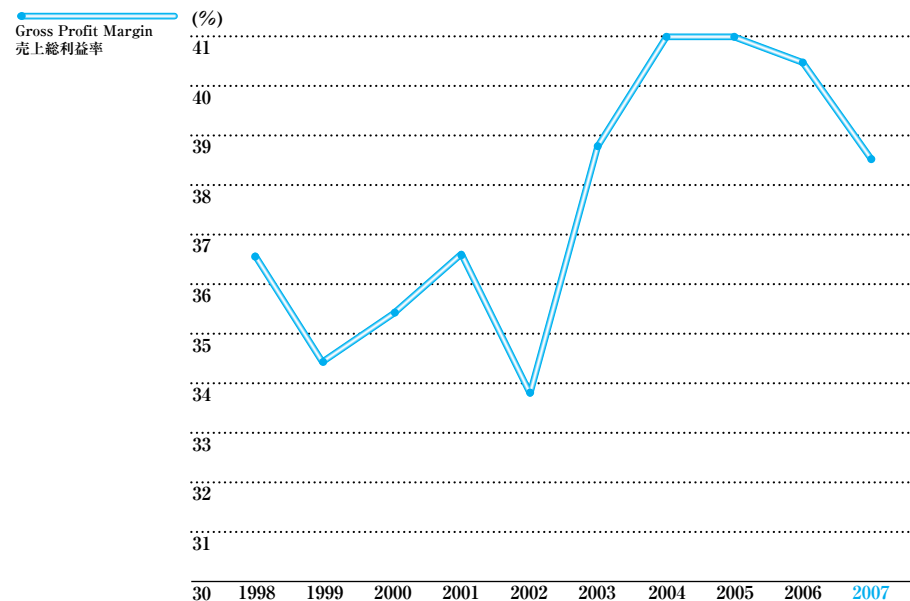
Cost Composition & Operating Income / Net Sales

費用構成, 売上高営業利益率



Gross Profit Margin

売上総利益率



Cost Composition & Operating Income / Net Sales 費用構成, 売上高営業利益率

Fiscal Year ended March 31 ~年3月期		1998	1999	2000	2001	2002	2003	2004	2005	2006	2007
Net Sales 売上高	(Million ¥)	611,795	555,280	555,358	594,259	533,964	535,073	584,889	608,588	626,782	736,651
Cost of Sales 売上原価	(Million ¥)	387,445	364,314	358,911	376,194	353,429	327,413	344,835	358,817	373,393	452,452
SG & A Expenses 販売管理費	(Million ¥)	138,404	136,734	133,662	131,203	134,907	135,112	142,157	144,219	152,675	168,135
Research & Development 研究開発費	(Million ¥)	39,914	42,383	36,605	42,513	41,407	40,235	46,494	49,441	50,501	52,028
Transfer of substitutional portion of employees' pension fund 厚生年金基金代行返上益	(Million ¥)	—	—	—	—	—	—	—	—	(11,915)	—
Operating Income 営業利益	(Million ¥)	46,032	11,849	26,180	44,349	4,221	32,313	51,403	56,111	62,128	64,036
Operating Income / Net Sales 売上高営業利益率	(%)	7.5	2.1	4.7	7.5	0.8	6.0	8.8	9.2	9.9	8.7

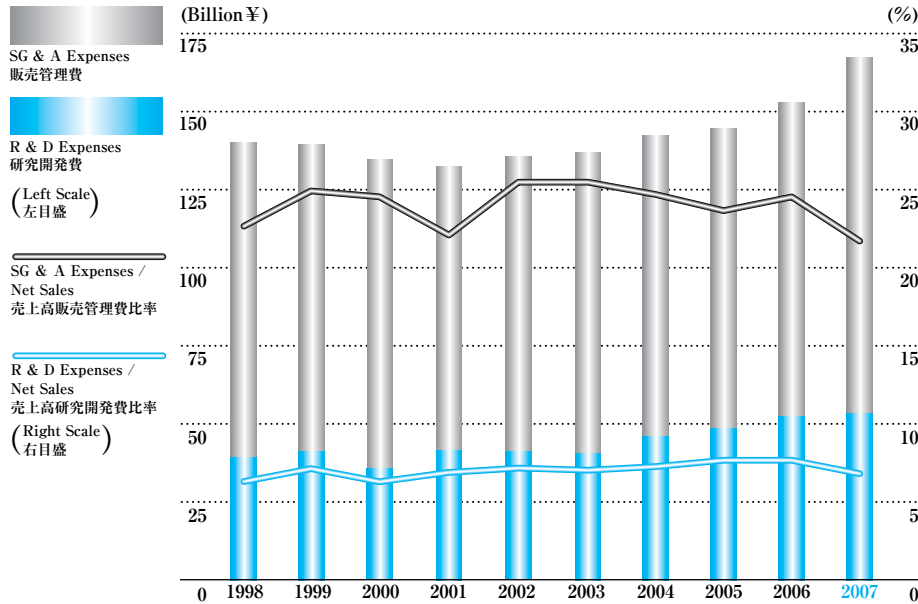
Gross Profit Margin 売上総利益率

Fiscal Year ended March 31 ~年3月期		1998	1999	2000	2001	2002	2003	2004	2005	2006	2007
Gross Profit 売上総利益	(Million ¥)	224,350	190,966	196,447	218,065	180,535	207,660	240,054	249,771	253,389	284,199
Net Sales 売上高	(Million ¥)	611,795	555,280	555,358	594,259	533,964	535,073	584,889	608,588	626,782	736,651
Gross Profit Margin 売上総利益率	(%)	36.7	34.4	35.4	36.7	33.8	38.8	41.0	41.0	40.4	38.6

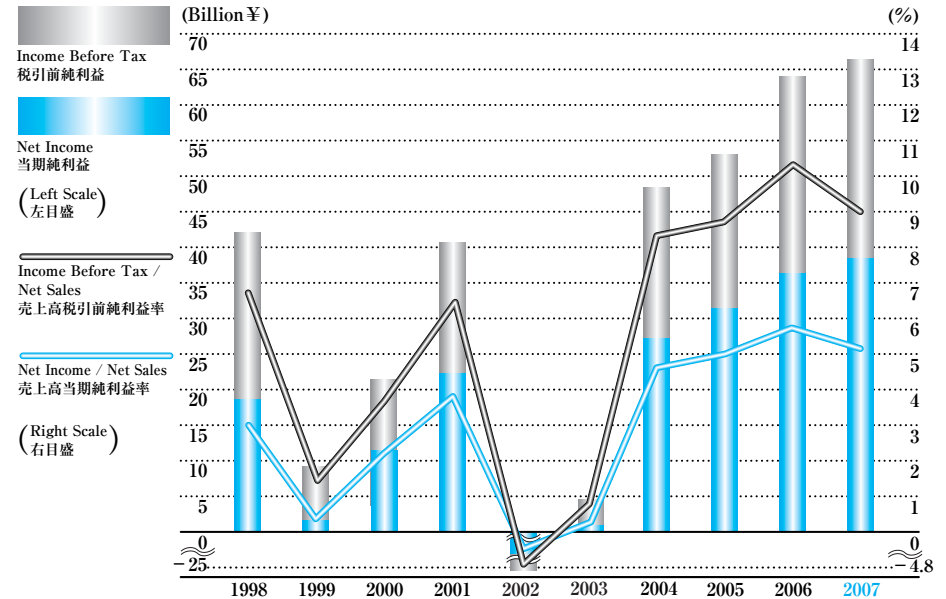
Note : Gross Profit Margin = Gross Profit / Net Sales

注 : 売上総利益率 = 売上総利益 / 売上高

SG & A Expenses / Net Sales, R & D Expenses / Net Sales
 売上高販売管理費比率, 売上高研究開発費比率



Income Before Tax / Net Sales, Net Income / Net Sales
 売上高税引前純利益率, 売上高当期純利益率



SG & A Expenses / Net Sales, R & D Expenses / Net Sales 売上高販売管理費比率, 売上高研究開発費比率

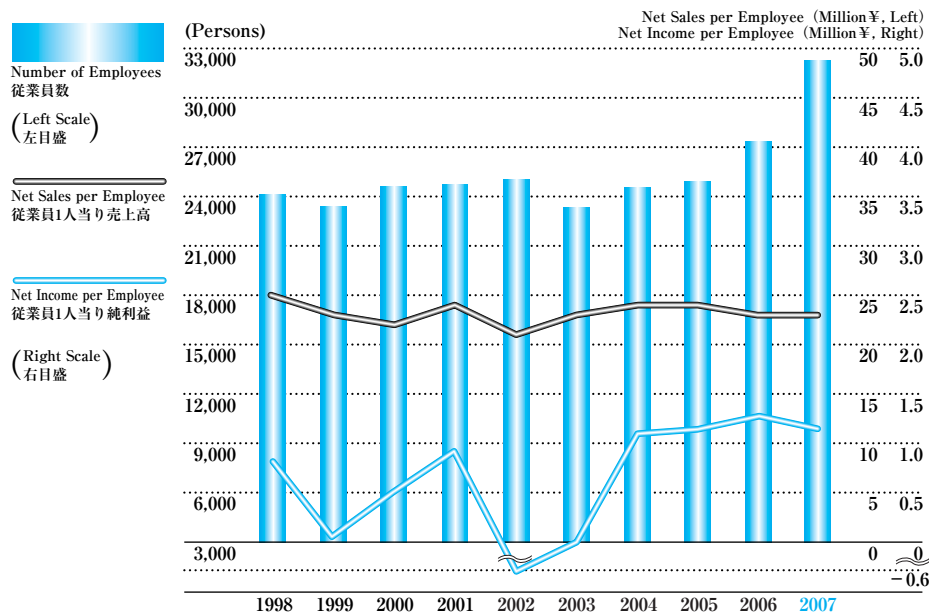
Fiscal Year ended March 31 ~年3月期		1998	1999	2000	2001	2002	2003	2004	2005	2006	2007
SG & A Expenses 販売管理費	(Million ¥)	138,404	136,734	133,662	131,203	134,907	135,112	142,157	144,219	152,675	168,135
R & D Expenses 研究開発費	(Million ¥)	39,914	42,383	36,605	42,513	41,407	40,235	46,494	49,441	50,501	52,028
Net Sales 売上高	(Million ¥)	611,795	555,280	555,358	594,259	533,964	535,073	584,889	608,588	626,782	736,651
SG & A Expenses / Net Sales 売上高販売管理費比率	(%)	22.6	24.6	24.1	22.1	25.3	25.3	24.3	23.7	24.3	22.8
R & D Expenses / Net Sales 売上高研究開発費比率	(%)	6.5	7.6	6.6	7.2	7.8	7.5	7.9	8.1	8.1	7.1

Income Before Tax / Net Sales, Net Income / Net Sales 売上高税引前純利益率, 売上高当期純利益率

Fiscal Year ended March 31 ~年3月期		1998	1999	2000	2001	2002	2003	2004	2005	2006	2007
Income Before Tax 税引前純利益	(Million ¥)	42,243	8,249	21,036	40,037	(25,373)	4,732	47,984	52,548	64,352	66,288
Net Income 当期純利益	(Million ¥)	18,300	2,174	11,561	22,297	(15,773)	511	26,811	30,176	35,763	38,280
Net Sales 売上高	(Million ¥)	611,795	555,280	555,358	594,259	533,964	535,073	584,889	608,588	626,782	736,651
Income Before Tax / Net Sales 売上高税引前純利益率	(%)	6.9	1.5	3.8	6.7	(4.8)	0.9	8.2	8.6	10.3	9.0
Net Income / Net Sales 売上高当期純利益率	(%)	3.0	0.4	2.1	3.8	(3.0)	0.1	4.6	5.0	5.7	5.2

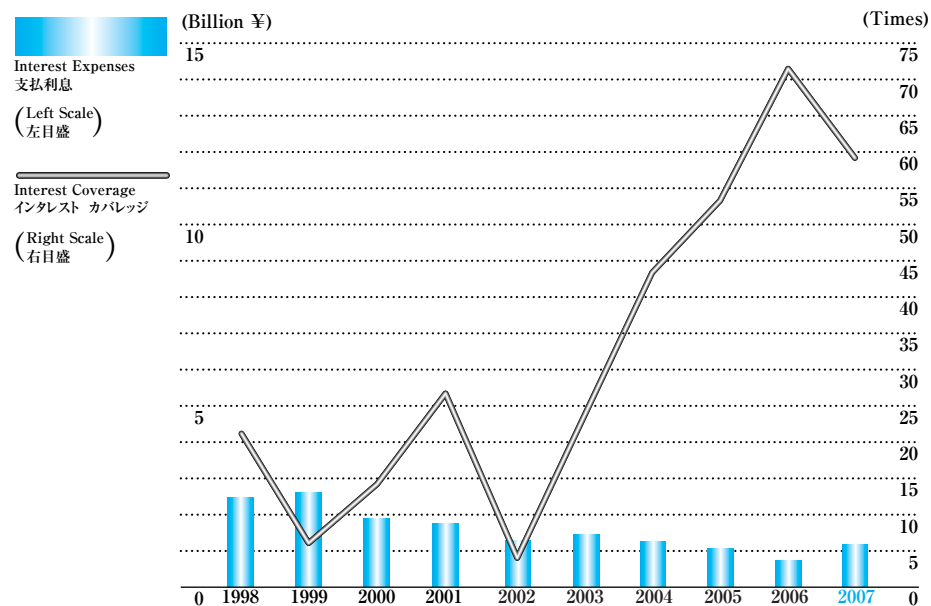
Net Sales & Net Income per Employee

従業員1人当り売上高, 当期純利益



Interest Expenses & Interest Coverage

支払利息, インタレスト カバレッジ



Net Sales & Net Income per Employee 従業員1人当り売上高, 当期純利益

Fiscal Year ended March 31 ~年3月期	1998	1999	2000	2001	2002	2003	2004	2005	2006	2007
Number of Employees 従業員数 (Persons)	24,048	23,742	24,915	25,067	25,395	23,751	24,576	24,904	27,408	32,456
Net Sales 売上高 (Million ¥)	611,795	555,280	555,358	594,259	533,964	535,073	584,889	608,588	626,782	736,651
Net Sales per Employee 従業員1人当り売上高 (Million ¥)	25	23	22	24	21	23	24	24	23	23
Net Income 当期純利益 (Million ¥)	18,300	2,174	11,561	22,297	(15,773)	511	26,811	30,176	35,763	38,280
Net Income per Employee 従業員1人当り当期純利益 (Million ¥)	0.8	0.1	0.5	0.9	(0.6)	0.0	1.1	1.2	1.3	1.2

Note : Number of Employees at the end of each fiscal year. 注 : 従業員数は各年度末数値

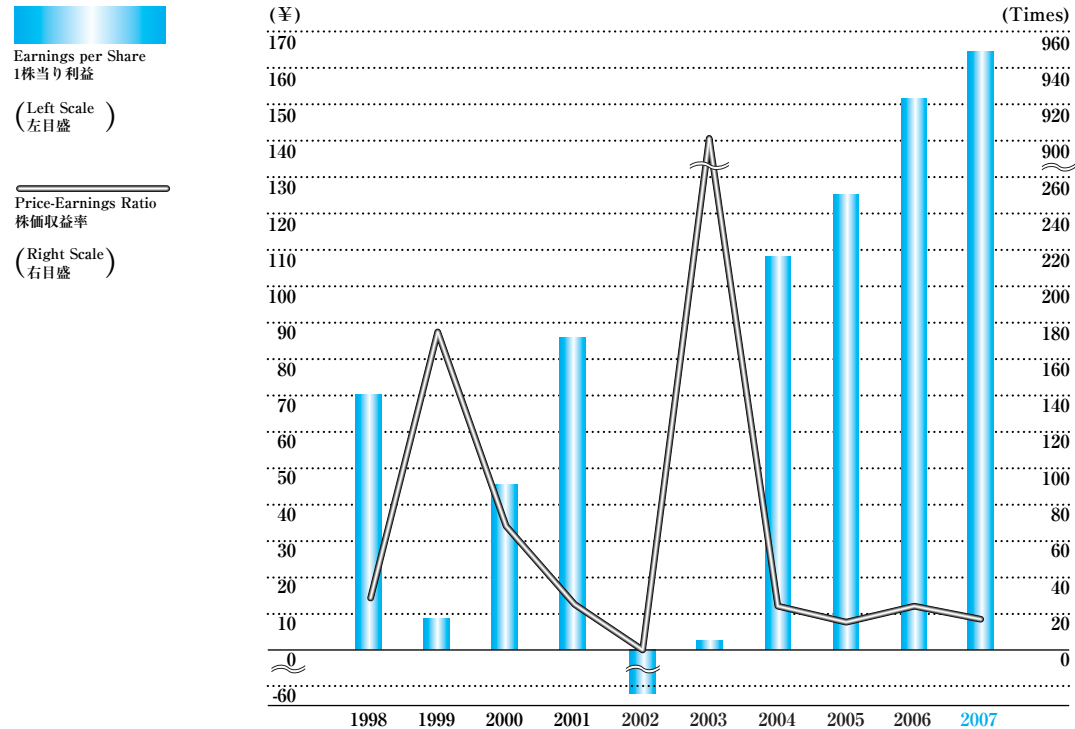
Interest Expenses & Interest Coverage 支払利息, インタレスト カバレッジ

Fiscal Year ended March 31 ~年3月期	1998	1999	2000	2001	2002	2003	2004	2005	2006	2007
Operating Income 営業利益 (Million ¥)	46,032	11,849	26,180	44,349	4,221	32,313	51,403	56,111	62,128	64,036
Interest Income 受取利息 (Million ¥)	1,730	1,656	1,147	1,620	1,069	1,082	900	1,300	1,507	1,846
Dividends Received 受取配当金 (Million ¥)	600	496	441	477	339	334	351	429	514	654
Interest Expenses 支払利息 (Million ¥)	2,412	2,518	1,897	1,731	1,291	1,430	1,217	1,084	898	1,116
Interest Coverage インタレスト カバレッジ (Times)	20.05	5.56	14.64	26.83	4.36	23.59	43.27	53.36	71.44	59.62

Note : Interest Coverage = (Operating Income + Interest Income & Dividends Received) / (Interest Expenses) 注 : インタレスト カバレッジ = (営業利益 + 受取利息及び受取配当金) / (支払利息)

Earnings per Share & Price-Earnings Ratio

1株当り利益, 株価収益率



Earnings per Share & Price-Earnings Ratio 1株当り利益, 株価収益率

Fiscal Year ended March 31 ~年3月期		1998	1999	2000	2001	2002	2003	2004	2005	2006	2007
Earnings per Share 1株当り利益	(¥)	69.8	8.3	44.5	85.3	(63.5)	2.1	107.5	124.8	151.05	164.85
Price-Earnings Ratio 株価収益率	(Times)	28.9	175.0	64.9	23.6	-	900.6	23.3	18.5	22.2	19.1

Notes : Earnings per Share are based on the number of shares equivalents with a dilutive effect.

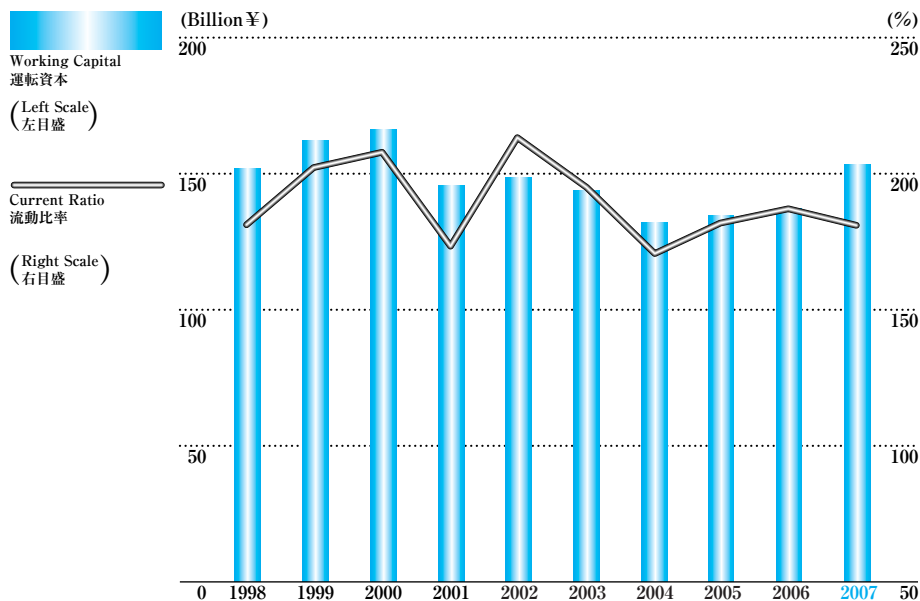
$$PER = \text{Fiscal-year-end Adjusted Stock Price} / (\text{Net Income} / \text{Number of Shares})$$

注：1株当り利益は、希薄化効果を考慮した株式数に基づいています。

$$\text{株価収益率} = \text{修正株価 (各年度末)} / (\text{当期純利益} / \text{株数})$$

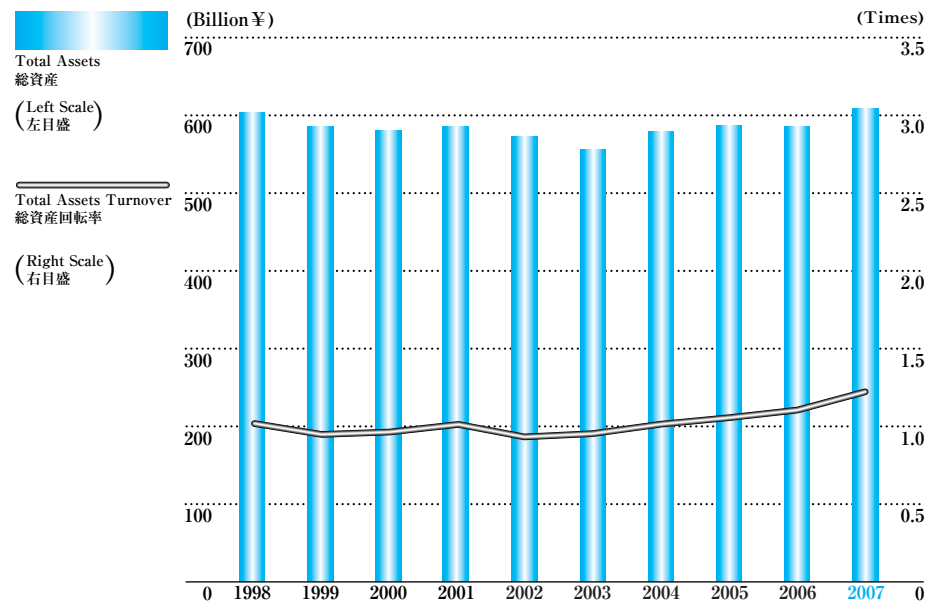
Current Ratio & Working Capital

流動比率, 運転資本



Total Assets Turnover

総資産回転率



Current Ratio & Working Capital 流動比率, 運転資本

Fiscal Year ended March 31 ~年3月期		1998	1999	2000	2001	2002	2003	2004	2005	2006	2007
Current Assets 流動資産	(Million ¥)	328,747	322,263	317,273	328,879	277,498	295,113	316,226	295,940	292,313	342,059
Current Liabilities 流動負債	(Million ¥)	176,948	157,653	147,476	183,390	129,445	151,577	184,548	162,988	155,660	188,860
Current Ratio 流動比率	(%)	186	204	215	179	214	195	171	182	188	181
Working Capital 運転資本	(Million ¥)	151,799	164,610	169,797	145,489	148,053	143,536	131,678	132,952	136,653	153,199

Note : Current Ratio = Current Assets / Current Liabilities
Working Capital = Current Assets - Current Liabilities

注：流動比率 = 流動資産 / 流動負債
運転資本 = 流動資産 - 流動負債

Total Assets Turnover 総資産回転率

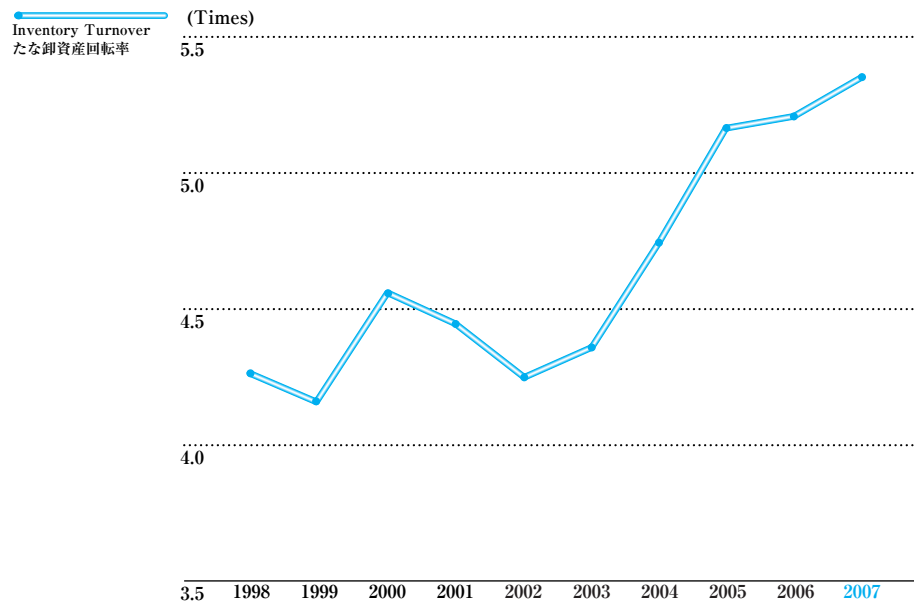
Fiscal Year ended March 31 ~年3月期		1998	1999	2000	2001	2002	2003	2004	2005	2006	2007
Net Sales 売上高	(Million ¥)	611,795	555,280	555,358	594,259	533,964	535,073	584,889	608,588	626,782	736,651
Total Assets 総資産	(Million ¥)	602,030	586,858	580,038	586,317	571,255	558,383	579,836	588,851	587,245	609,699
Total Assets Turnover 総資産回転率	(Times)	1.02	0.95	0.96	1.01	0.93	0.96	1.01	1.03	1.07	1.21

Notes : Total Assets are based on the average of the beginning and end of each fiscal year.
Total Assets Turnover = Net Sales / Total Assets

注：総資産は期中平均
総資産回転率 = 売上高 / 総資産

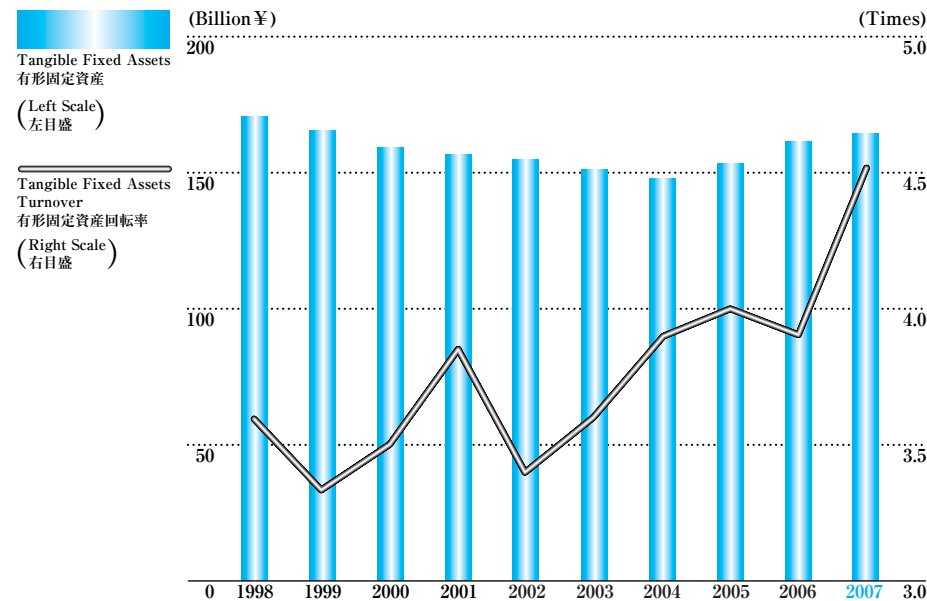
Inventory Turnover

たな卸資産回転率



Tangible Fixed Assets Turnover

有形固定資産回転率



Inventory Turnover たな卸資産回転率

Fiscal Year ended March 31 ~年3月期	1998	1999	2000	2001	2002	2003	2004	2005	2006	2007
Cost of Sales 売上原価 (Million ¥)	387,445	364,314	358,911	376,194	353,429	327,413	344,835	358,817	373,393	452,452
Inventory たな卸資産 (Million ¥)	90,474	87,258	78,671	84,700	83,105	75,032	72,894	69,463	71,772	84,534
Inventory Turnover たな卸資産回転率 (Times)	4.28	4.18	4.56	4.44	4.25	4.36	4.73	5.17	5.20	5.35

Notes : Inventory is based on the average of the beginning and end of each fiscal year.
Inventory Turnover = Cost of Sales / Inventory

注：たな卸資産は期中平均
たな卸資産回転率 = 売上原価 / たな卸資産

Tangible Fixed Assets Turnover 有形固定資産回転率

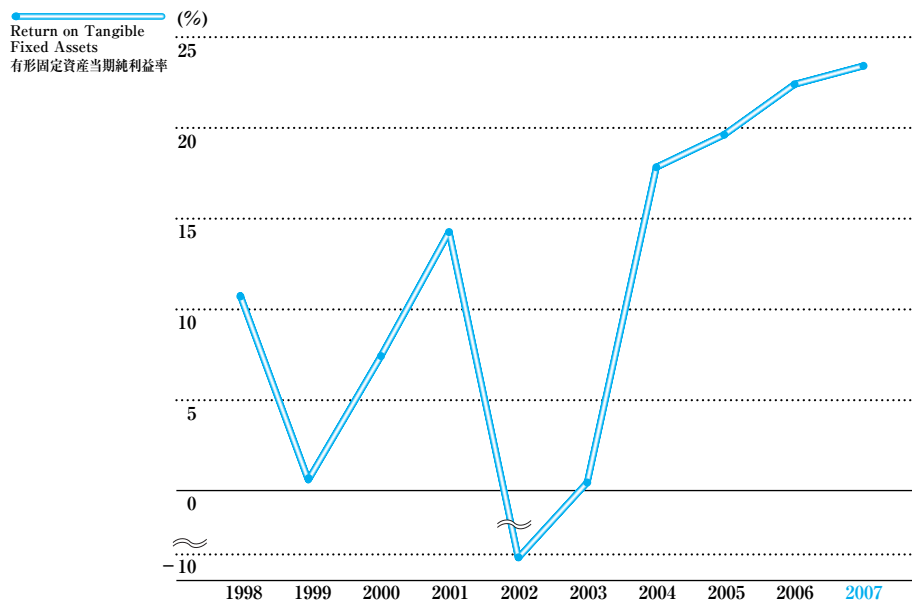
Fiscal Year ended March 31 ~年3月期	1998	1999	2000	2001	2002	2003	2004	2005	2006	2007
Net Sales 売上高 (Million ¥)	611,795	555,280	555,358	594,259	533,964	535,073	584,889	608,588	626,782	736,651
Tangible Fixed Assets 有形固定資産 (Million ¥)	170,446	166,689	159,465	157,577	155,707	150,670	149,884	152,706	161,153	163,466
Tangible Fixed Assets Turnover 有形固定資産回転率 (Times)	3.6	3.3	3.5	3.8	3.4	3.6	3.9	4.0	3.89	4.51

Notes : Tangible Fixed Assets are based on the average of the beginning and end of each fiscal year.
Tangible Fixed Assets Turnover = Net Sales / Tangible Fixed Assets

注：有形固定資産は、期中平均
有形固定資産回転率 = 売上高 / 有形固定資産

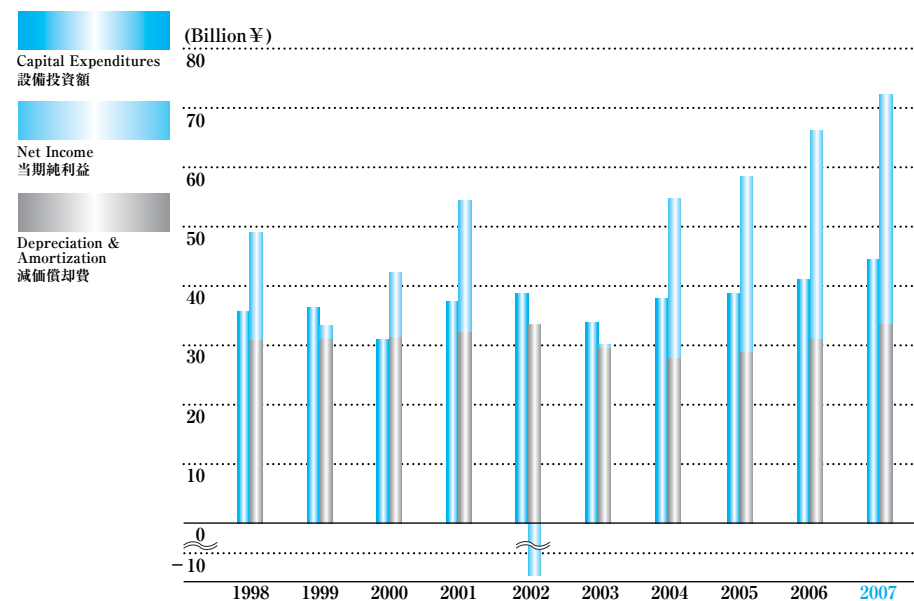
Return on Tangible Fixed Assets

有形固定資産当期純利益率



Capital Expenditures & Cash Flows

設備投資額, キャッシュ・フロー



Return on Tangible Fixed Assets 有形固定資産当期純利益率

Fiscal Year ended March 31 ~年3月期		1998	1999	2000	2001	2002	2003	2004	2005	2006	2007
Net Income 当期純利益	(Million ¥)	18,300	2,174	11,561	22,297	(15,773)	511	26,811	30,176	35,763	38,280
Tangible Fixed Assets 有形固定資産	(Million ¥)	170,446	166,689	159,465	157,577	155,707	150,670	149,884	152,706	161,153	163,466
Return on Tangible Fixed Assets 有形固定資産当期純利益率	(%)	10.7	1.3	7.2	14.1	(10.1)	0.3	17.9	19.8	22.2	23.4

Notes : Tangible Fixed Assets are based on the average of the beginning and end of each fiscal year.

Return on Tangible Fixed Assets = Net Income / Tangible Fixed Assets

注：有形固定資産は期中平均

有形固定資産当期純利益率 = 当期純利益 / 有形固定資産

Capital Expenditures & Cash Flows 設備投資額, キャッシュ・フロー

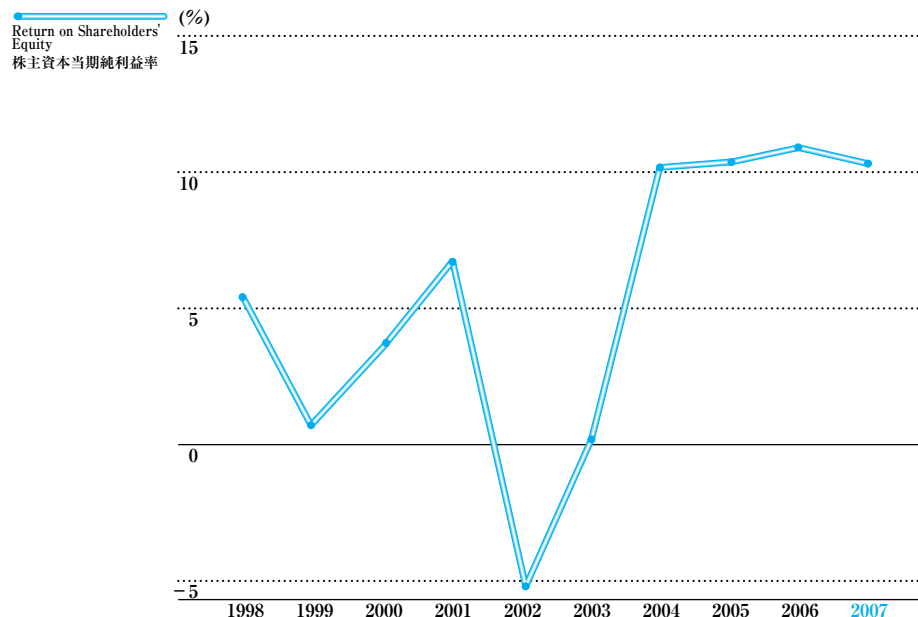
Fiscal Year ended March 31 ~年3月期		1998	1999	2000	2001	2002	2003	2004	2005	2006	2007
Capital Expenditures 設備投資額	(Million ¥)	35,896	36,696	31,146	37,583	38,896	34,454	38,115	38,579	40,560	44,447
Net Income 当期純利益	(Million ¥)	18,300	2,174	11,561	22,297	(15,773)	511	26,811	30,176	35,763	38,280
Depreciation & Amortization 減価償却費	(Million ¥)	31,129	31,396	31,445	32,217	33,569	29,676	27,662	28,642	30,825	33,922
Cash Flows キャッシュ・フロー	(Million ¥)	49,429	33,570	43,006	54,514	17,796	30,187	54,473	58,818	66,588	72,202

Note : Cash Flows = Net Income + (Depreciation & Amortization)

注：キャッシュ・フロー = 当期純利益 + 減価償却費

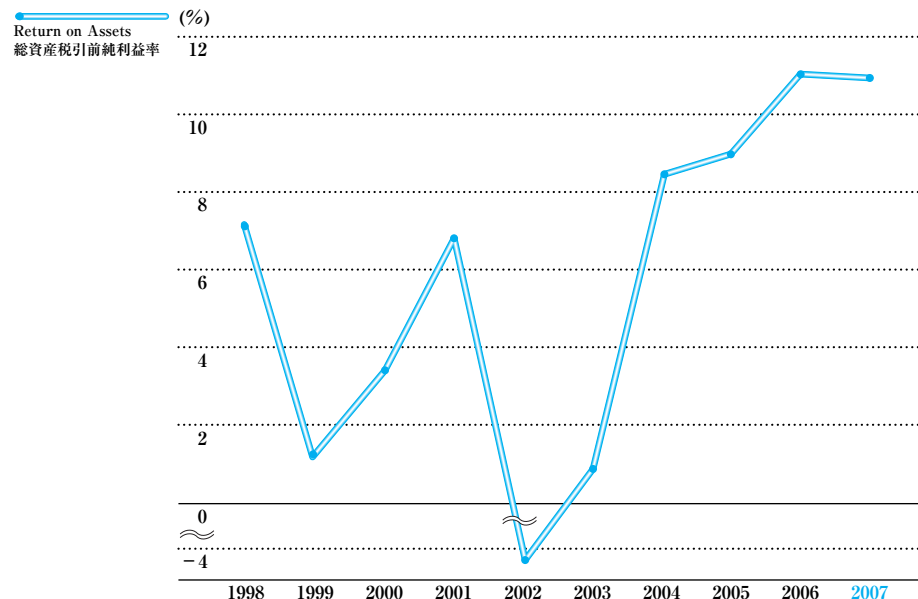
Return on Shareholders' Equity

株主資本当期純利益率 (ROE)



Return on Assets

総資産税引前純利益率 (ROA)



Return on Shareholders' Equity 株主資本当期純利益率 (ROE)

Fiscal Year ended March 31 ~年3月期		1998	1999	2000	2001	2002	2003	2004	2005	2006	2007
Net Income 当期純利益	(Million ¥)	18,300	2,174	11,561	22,297	(15,773)	511	26,811	30,176	35,763	38,280
Shareholders' Equity 株主資本	(Million ¥)	338,084	332,162	328,660	331,010	312,096	274,922	263,160	290,260	334,374	372,880
Return on Shareholders' Equity 株主資本当期純利益率	(%)	5.4	0.7	3.5	6.7	(5.1)	0.2	10.2	10.4	10.7	10.3

Notes : Shareholders' Equity is based on the average of the beginning and end of each fiscal year.
Return on Shareholders' Equity = Net Income / Shareholders' Equity

注：株主資本は期中平均
株主資本当期純利益率 = 当期純利益 / 株主資本

Return on Assets 総資産税引前純利益率 (ROA)

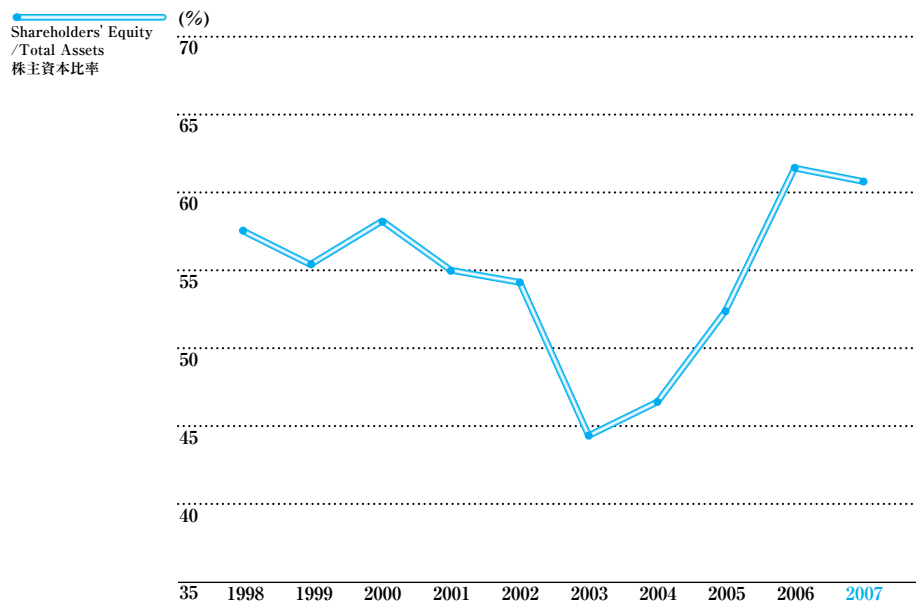
Fiscal Year ended March 31 ~年3月期		1998	1999	2000	2001	2002	2003	2004	2005	2006	2007
Income Before Tax 税引前純利益	(Million ¥)	42,243	8,249	21,036	40,037	(25,373)	4,732	47,984	52,548	64,352	66,288
Total Assets 総資産	(Million ¥)	602,030	586,858	580,038	586,317	571,255	558,383	579,836	588,851	587,245	609,699
Return on Assets 総資産税引前純利益率	(%)	7.0	1.4	3.6	6.8	(4.4)	0.8	8.3	8.9	11.0	10.9

Notes : Total Assets are based on the average of the beginning and end of each fiscal year.
Return on Assets = Income Before Tax / Total Assets

注：総資産は期中平均
総資産税引前純利益率 = 税引前純利益 / 総資産

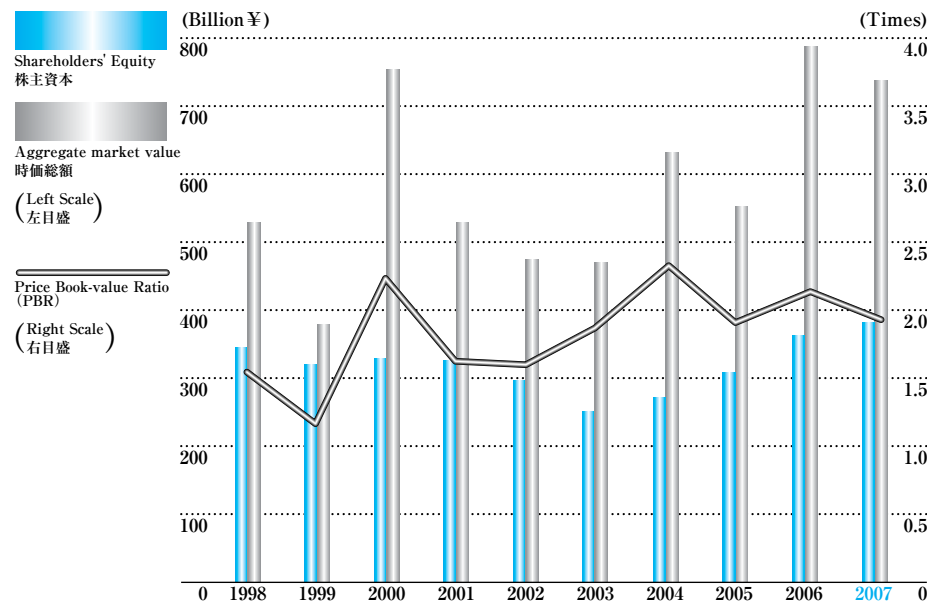
Shareholders' Equity / Total Assets

株主資本比率



Aggregate market value & Price Book-value Ratio

時価総額, 株価純資産倍率 (PBR)



Shareholders' Equity / Total Assets 株主資本比率

Fiscal Year ended March 31 ~年3月期		1998	1999	2000	2001	2002	2003	2004	2005	2006	2007
Debt 負債	(Million ¥)	250,063	259,328	243,427	267,186	251,132	315,789	317,563	279,619	226,124	247,515
Debt / Equity Ratio デットエクイティレシオ	(Times)	0.729	0.807	0.724	0.820	0.842	1.255	1.156	0.914	0.623	0.647
Shareholders' Equity 株主資本	(Million ¥)	343,066	321,258	336,062	325,958	298,234	251,610	274,710	305,810	362,937	382,822
Total Assets 総資産	(Million ¥)	593,129	580,586	579,489	593,144	549,366	567,399	592,273	585,429	589,061	630,337
Shareholders' Equity / Total Assets 株主資本比率	(%)	57.8	55.3	58.0	55.0	54.3	44.3	46.4	52.2	61.6	60.7

Notes : Debt, Shareholders' Equity at the end of each fiscal year. Debt / Equity Ratio = Debt / Shareholders' Equity 注：負債・株主資本は各年度末数値 デットエクイティレシオ = 負債 / 株主資本

Aggregate market value & Price Book-value Ratio 時価総額, 株価純資産倍率 (PBR)

Fiscal Year ended March 31 ~年3月期		1998	1999	2000	2001	2002	2003	2004	2005	2006	2007
Shareholders' Equity 株主資本	(Million ¥)	343,066	321,258	336,062	325,958	298,234	251,610	274,710	305,810	362,937	382,822
Aggregate market value 時価総額	(Million ¥)	529,457	380,519	749,863	525,813	476,932	460,228	625,573	556,966	792,423	730,753
Number of Shares 株数		262,107,214	257,107,214	256,802,236	248,611,236	248,272,947	242,864,183	239,224,823	238,019,781	234,444,765	230,521,530
Shareholders' Equity per Share 1株当り株主資本	(¥)	1,309	1,250	1,309	1,311	1,201	1,036	1,148	1,285	1,548	1,661
Adjusted Stock Price 修正株価	(¥)	2,020	1,480	2,920	2,115	1,921	1,895	2,615	2,340	3,380	3,170
Price Book-value Ratio(PBR) 株価純資産倍率	(Times)	1.54	1.18	2.23	1.61	1.60	1.83	2.28	1.82	2.18	1.91

Notes : Number of shares outstanding at end of period (consolidated).

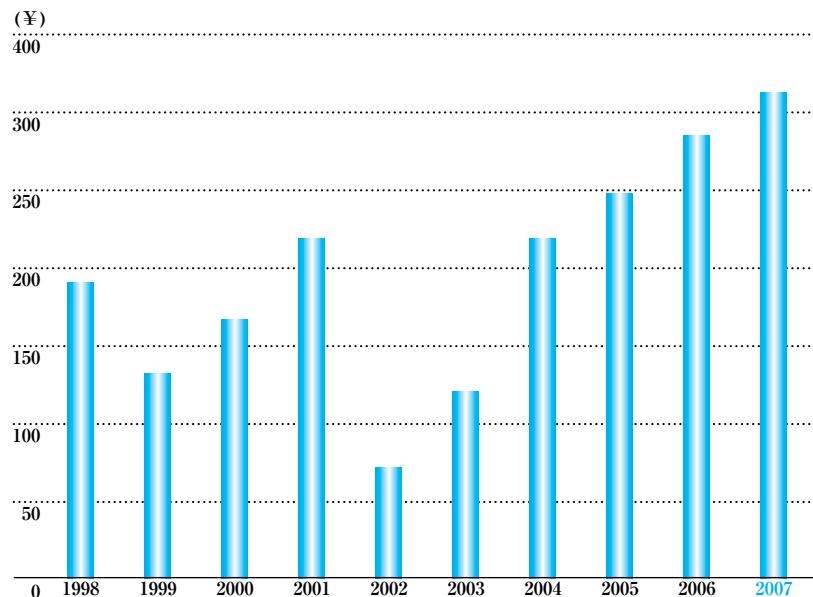
Number of Shares, Shareholders' Equity and Adjusted Stock Price at the end of each fiscal year.

注：株主資本は期末発行済株式数(連結)に基づいています。株数、株主資本、修正株価は各年度末数値

Cash Flows per Share

1株当りキャッシュ・フロー

Cash Flows per Share
1株当りキャッシュ・フロー



Cash Flows per Share 1株当りキャッシュ・フロー

Fiscal Year ended March 31 ~年3月期	1998	1999	2000	2001	2002	2003	2004	2005	2006	2007
Cash Flows キャッシュ・フロー (Million ¥)	49,429	33,570	43,006	54,514	17,796	30,187	54,473	58,818	66,588	72,202
Number of Shares 株数	262,107,214	257,107,214	256,802,236	248,611,236	248,272,947	242,864,183	239,224,823	238,019,781	234,444,765	230,521,530
Cash Flows per Share 1株当りキャッシュ・フロー (¥)	189	131	167	219	72	124	228	247	284	313

Notes: Cash Flows per Share are based on Common Shares.
Number of Shares at the end of each fiscal year.
Cash Flows = Net Income + (Depreciation & Amortization)

注: 1株当りキャッシュ・フローは、発行済普通株式に基づいています。
株数は各年度末数値
キャッシュ・フロー = 当期純利益 + 減価償却費

Consolidated Statements of Operations (with transfer of substitutional portion of employees' pension fund stated separately)

連結損益計算書 (厚生年金基金代行返上益一括独立表示)

(Million ¥)

Years ended March 31	1998	1999	2000	2001	2002	2003	2004	2005	2006	2007
NET SALES 売上高	611,795	555,280	555,358	594,259	533,964	535,073	584,889	608,588	626,782	736,651
COSTS AND EXPENSES : 売上原価及び費用										
Cost of sales 売上原価	387,445	364,314	358,911	376,194	353,429	327,413	344,835	358,817	373,393	452,452
Selling, general and administrative 販売費及び一般管理費	138,404	136,734	133,662	131,203	134,907	135,112	142,157	144,219	152,675	168,135
Research and development 試験研究開発費	39,914	42,383	36,605	42,513	41,407	40,235	46,494	49,441	50,501	52,028
Transfer of substitutional portion of employees' pension fund 厚生年金基金代行返上益	—	—	—	—	—	—	—	—	(11,915)	—
Interest expense (income), net 支払利息及び受取利息-純額-	682	862	750	111	223	348	317	(216)	(609)	(729)
Foreign exchange loss (gain), net 為替差損益-純額-	4,419	2,766	2,841	1,389	1,506	575	1,254	75	1,306	1,086
Other, net その他費用(収益)-純額-	(1,312)	(28)	1,553	2,812	27,865	26,658	1,848	3,704	(2,921)	(2,609)
Total 合計	569,552	547,031	534,322	554,222	559,337	530,341	536,905	556,040	562,430	670,363
INCOME BEFORE INCOME TAXES, MINORITY INTERESTS, EXTRAORDINARY ITEM AND CUMULATIVE EFFECT OF ACCOUNTING CHANGE	42,243	8,249	21,036	40,037	(25,373)	4,732	47,984	52,548	64,352	66,288
INCOME TAXES : 法人税等										
Current 当期税額	24,579	12,426	14,857	22,720	6,783	7,851	13,527	20,393	23,276	22,531
Deferred 繰延税額	(1,305)	(8,591)	(5,809)	(5,402)	(16,131)	(3,915)	7,235	1,715	3,962	3,887
Tax effects of subsidiaries' operating loss carryforwards 子会社での繰越欠損金の期間調整税額	(176)	(142)	—	—	—	—	—	—	—	—
Adjustment of Deferred Tax Assets and Liabilities for Enacted Changes in Tax Rate 標準税率の変更影響額	273	2,351	—	—	—	—	—	—	—	—
Total 合計	23,371	6,044	9,048	17,318	(9,348)	3,936	20,762	22,108	27,238	26,418
INCOME BEFORE MINORITY INTERESTS, EXTRAORDINARY ITEM AND CUMULATIVE EFFECT OF ACCOUNTING CHANGE	18,468	2,205	11,988	22,719	(16,025)	796	27,222	30,440	37,114	39,870
MINORITY INTERESTS 少数株主損益	168	31	427	422	132	285	411	264	150	238
INCOME BEFORE EXTRAORDINARY ITEM AND CUMULATIVE EFFECT OF ACCOUNTING CHANGE	18,300	2,174	11,561	22,297	(16,157)	511	26,811	30,176	36,964	39,632
EXTRAORDINARY ITEM : 特別項目										
Reduction of income taxes arising from utilization of subsidiaries' operating loss carryforwards 子会社での繰越欠損金の利用により生じた法人税等の軽減額	—	—	—	—	—	—	—	—	—	—
INCOME BEFORE CUMULATIVE EFFECT OF ACCOUNTING CHANGE	18,300	2,174	11,561	22,297	(16,157)	511	26,811	30,176	36,964	38,280
CUMULATIVE EFFECT OF ACCOUNTING CHANGE	—	—	—	—	384	0	*1 0	0	1,201	0
NET INCOME 当期純利益	18,300	2,174	11,561	22,297	(15,773)	511	26,811	30,176	35,763	38,280
										(¥)
NET INCOME PER SHARE (Basic) 1株当り当期純利益	71.4	8.3	45.0	87.4	(63.5)	2.1	110.7	126.5	151.1	165.0
(Diluted) 希薄化後1株当り当期純利益	69.8	8.3	44.5	85.3	—	—	107.5	124.8	151.1	164.9
CASH DIVIDENDS PER SHARE APPLICABLE TO PERIOD 現金配当金	13.0	13.0	13.0	13.0	13.0	10.0	20	24	30	34

*1 Cumulative effect on the adoption of SFAS No.133 and 138, accounting for derivative instruments and hedging activities.

*1 デリバティブ及びヘッジに関する新会計基準 (SFAS No.133及び138) 適用による期首累積影響額

Consolidated Balance Sheets 連結貸借対照表

(Million ¥)

Years ended March 31	1998	1999	2000	2001	2002	2003	2004	2005	2006	2007
ASSETS 資産の部										
CURRENT ASSETS : 流動資産										
Cash and cash equivalents 現金及び現金同等物	68,365	88,900	88,670	85,621	70,779	79,919	95,059	80,619	52,285	42,995
Short-term investments 短期投資	6,142	1,054	6,300	—	—	—	—	—	—	—
Notes and accounts receivable, trade 受取手形及び売掛金	138,149	134,183	130,355	133,798	114,906	113,595	124,891	124,409	139,001	175,700
Allowance for doubtful receivables 貸倒引当金	(3,301)	(2,450)	(2,001)	(2,194)	(2,755)	(3,484)	(2,823)	(2,757)	(2,653)	(2,297)
Inventories たな卸資産	94,981	79,535	77,807	91,593	74,617	75,446	70,341	68,585	74,958	94,109
Deferred income taxes 繰延税金	11,798	11,336	9,026	12,186	13,001	20,139	18,458	17,240	18,571	19,985
Other current assets その他流動資産	12,613	9,705	7,116	7,875	6,950	9,498	10,300	7,844	10,151	11,567
Total current assets 流動資産合計	328,747	322,263	317,273	328,879	277,498	295,113	316,226	295,940	292,313	342,059
PROPERTY, PLANT AND EQUIPMENT : 有形固定資産										
Land 土地	50,166	50,598	51,082	50,479	46,979	46,094	45,583	43,794	46,571	28,271
Buildings 建物及び構築物	107,974	111,263	110,330	113,414	108,547	99,455	107,852	110,367	117,414	125,227
Machinery and equipment 機械その他	143,809	135,197	129,639	132,945	133,672	137,710	141,932	143,111	159,254	175,398
Construction in progress 建設仮勘定	4,124	4,326	3,933	5,680	8,642	11,313	3,760	5,946	8,180	6,389
Total 小計	306,073	301,384	294,984	302,518	297,840	294,572	299,127	303,218	331,419	335,285
Accumulated depreciation 減価償却累計額	(135,591)	(138,489)	(138,950)	(143,399)	(145,546)	(145,527)	(148,404)	(148,529)	(163,802)	(175,970)
Net property, plant and equipment 有形固定資産合計	170,482	162,895	156,034	159,119	152,294	149,045	150,723	154,689	167,617	159,315
OTHER ASSETS : 投資その他の資産										
Investments in and advances to affiliates 関連会社に対する投資及び貸付金	1,843	1,770	2,013	853	785	1,187	1,245	17,343	16,135	16,677
Investment securities 投資有価証券	55,336	54,114	69,397	57,500	43,431	30,861	50,331	49,764	62,477	46,770
Leasehold deposits 施設借用保証金	11,730	12,035	10,608	11,159	10,653	9,173	8,777	8,595	8,553	8,650
Deferred income taxes 繰延税金	7,507	8,834	6,415	17,986	43,901	64,305	47,301	41,499	15,892	17,293
Other その他の資産	17,484	18,675	17,749	17,648	20,804	17,715	17,670	17,599	26,074	39,573
Total other assets 投資その他の資産合計	93,900	95,428	106,182	105,146	119,574	123,241	125,324	134,800	129,131	128,963
TOTAL 資産合計	593,129	580,586	579,489	593,144	549,366	567,399	592,273	585,429	589,061	630,337

Consolidated Balance Sheets 連結貸借対照表

(Million ¥)

Years ended March 31	1998	1999	2000	2001	2002	2003	2004	2005	2006	2007
LIABILITIES AND SHAREHOLDERS' EQUITY 負債・資本の部										
CURRENT LIABILITIES : 流動負債										
Bank loans 短期借入金	12,578	27,946	10,242	8,916	14,723	18,948	15,444	12,424	2,468	19,868
Notes and accounts payable, trade 支払手形・買掛金・未払金	88,756	70,971	78,467	82,225	60,000	67,773	79,345	75,866	85,224	91,543
Accrued expenses 未払費用	23,117	20,924	21,430	24,484	22,748	24,394	26,146	26,701	28,683	32,548
Income taxes 未払税金	15,011	9,020	11,334	14,797	3,832	4,095	10,114	12,724	12,288	11,467
Other current liabilities その他流動負債	29,020	26,625	24,741	26,628	26,950	24,370	23,463	24,770	26,701	33,170
Current portion of long-term debt 一年以内に返済予定の長期債務	8,466	2,167	1,262	26,340	1,192	11,997	30,036	10,503	296	264
Total current liabilities 流動負債合計	176,948	157,653	147,476	183,390	129,445	151,577	184,548	162,988	155,660	188,860
LONG-TERM DEBT : 長期借入金	33,500	56,610	57,968	31,957	42,796	40,315	11,207	1,832	1,049	1,681
DEFERRED INCOME TAXES : 繰延税金	11,335	908	3,725	23	436	643	483	1,199	673	2,006
TERMINATION AND RETIREMENT BENEFITS : 退職給付引当金	24,913	40,076	30,629	48,929	75,367	120,730	119,738	111,988	67,046	52,700
OTHER LONG-TERM LIABILITIES : その他固定負債	367	1,525	1,114	370	291	52	140	63	571	830
MINORITY INTERESTS IN SUBSIDIARIES : 少数株主持分	3,000	2,556	2,515	2,517	2,797	2,472	1,447	1,549	1,125	1,438
Total liabilities 負債合計	250,063	259,328	243,427	267,186	251,132	315,789	317,563	279,619	226,124	247,515
SHAREHOLDERS' EQUITY : 資本										
Common stock 資本金	64,079	64,079	64,082	64,082	64,082	64,082	64,082	64,100	64,100	64,100
Additional paid-in capital 資本剰余金	98,702	98,702	98,705	98,705	98,705	98,705	98,705	98,726	98,724	98,828
Legal reserve 利益準備金	6,314	6,811	7,250	7,652	7,660	7,619	7,450	7,649	8,082	8,256
Retained earnings その他剰余金	174,686	166,020	173,804	174,077	155,069	153,134	175,296	199,551	227,791	258,057
Accumulated other comprehensive income (loss) その他の包括利益(損失)累計額	(715)	(14,012)	(7,168)	(17,346)	(25,363)	(59,909)	(50,559)	(41,009)	(2,971)	(3,013)
Foreign currency translation adjustments 為替換算調整額	(5,912)	(11,954)	(20,998)	(13,712)	(7,402)	(9,407)	(15,625)	(10,554)	(1,353)	6,560
Minimum pension liability adjustments 最小退職年金債務調整額	(1,401)	(7,138)	—	(7,251)	(21,224)	(48,708)	(45,238)	(41,123)	(21,183)	(22,169)
Net unrealized gains on available for sale securities 売却可能有価証券未実現利益	6,598	5,080	13,830	3,617	3,331	(1,716)	10,087	10,909	19,671	12,738
Net gains (losses) on derivative instruments デリバティブ純利益(損失)	—	—	—	—	(68)	(78)	217	(241)	(106)	(142)
Treasury stock 自己株式	—	(342)	(611)	(1,212)	(1,919)	(12,021)	(20,264)	(23,207)	(32,789)	(43,406)
Total shareholders' equity 資本合計	343,066	321,258	336,062	325,958	298,234	251,610	274,710	305,810	362,937	382,822
TOTAL 負債・資本合計	593,129	580,586	579,489	593,144	549,366	567,399	592,273	585,429	589,061	630,337

Consolidated Statements of Cash Flows 連結キャッシュ・フロー計算書

(Million ¥)

Years ended March 31	1998	1999	2000	2001	2002	2003	2004	2005	2006	2007
OPERATING ACTIVITIES : 営業活動における資金収支										
Net Income 当期純利益	18,300	2,174	11,561	22,297	(15,773)	511	26,811	30,176	35,763	38,280
Adjustments to reconcile net income to net cash provided by operating activities : 営業活動における資金収支と当期純利益の調整										
Depreciation and amortization 減価償却費	31,129	31,396	31,445	32,217	33,569	29,676	27,662	28,642	30,825	33,923
Net loss on sales and disposals of property, plant and equipment 固定資産除売却損(純額)	—	458	412	760	1,314	11	479	918	42	6,445
Loss on impairment of property, plant and equipment 固定資産の減損	268	—	—	—	6,815	4,231	41	614	—	1,441
Net gain on sales of short-term investments and investment securities 投資有価証券売却益(純額)	—	(1,725)	(2,783)	(3,703)	(1,008)	1,221	(1,039)	(987)	(4,302)	(954)
Loss on impairment of investment securities and other assets 投資有価証券及びその他の資産の減損	—	—	2,072	2,460	17,199	2,269	2,413	366	757	682
Bad debt expense 貸倒損失	—	—	5,638	3,810	520	465	—	140	—	—
Loss from transfer of obligation with transfer of substitutional portion of employees' pension fund 厚生年金基金代行返上に伴う債務返還差額	—	—	—	—	—	—	—	—	(41,339)	—
Gain on establishment of retirement benefit trust 退職給付信託設定益	—	—	—	—	—	—	—	—	—	(10,141)
Termination and retirement benefits 退職給付引当金の増減	2,004	4,178	5,778	4,990	2,616	(1,087)	5,016	1,956	29,254	(1,403)
Deferred income taxes 繰延税金	(230)	(6,358)	(5,809)	(5,402)	(16,131)	(3,915)	7,235	1,715	3,962	3,887
Noncash interest expense, net 資金収支を伴わない支払利息	—	—	—	—	—	—	—	—	—	—
Minority interests 少数株主利益	168	31	427	422	132	285	411	264	150	238
Equity in loss of affiliates 持分法投資損益	—	—	—	—	—	—	—	1,483	493	1,352
Loss on sale of business entities 子会社・事業の売却による損益	—	286	—	—	—	(1,550)	494	—	—	—
Net gain on sales of business entities 事業売却益	—	—	—	—	—	—	—	—	(194)	—
Cumulative effect of accounting change 会計方針変更による累計影響額	—	—	—	—	(384)	—	—	—	1,201	—
Change in assets and liabilities, net of effects of acquisitions : 資産・負債の増減(会社買収による影響を除く)										
Notes and accounts receivable — trade 受取手形及び売掛金	(3,537)	2,025	2,507	(5,593)	19,402	1,363	(10,853)	(2,762)	(9,629)	(19,773)
Inventories たな卸資産	(8,412)	10,529	(534)	(13,320)	17,403	(1,918)	4,105	(1,964)	(2,098)	(13,955)
Other assets その他の資産	(7,004)	5,306	(3,030)	875	2,279	214	891	934	(560)	2,248
Notes and accounts payable — trade 支払手形及び買掛金	(4,315)	(11,969)	10,062	3,620	(22,291)	9,770	10,976	(4,908)	7,079	(5,674)
Income taxes payable 未払税金	(1,998)	(5,967)	2,633	3,438	(10,992)	232	6,015	2,423	(685)	(2,244)
Accrued expenses and other 未払費用及びその他流動負債	4,425	(970)	(585)	4,140	(1,082)	130	(52)	2,114	1,411	6,480
Other — net その他	1,288	(189)	132	(215)	99	(54)	82	(48)	(431)	(293)
Total adjustments 調整計	13,786	27,409	48,365	28,499	49,460	41,343	53,876	30,900	15,936	2,259
Net cash provided by operating activities 営業活動における資金収支合計	32,086	29,583	59,926	50,796	33,687	41,854	80,687	61,076	51,699	40,539
INVESTING ACTIVITIES : 投資活動における資金収支										
Net proceeds (purchase) of short-term investments and investment securities 短期投資および投資有価証券の増減	19,858	4,505	(5,124)	3,985	(3,070)	649	277	1,600	5,536	(465)
Capital expenditures 有形固定資産の取得	(35,896)	(36,696)	(31,146)	(37,583)	(38,896)	(34,454)	(38,115)	(38,579)	(40,560)	(44,689)
Acquisition of businesses, net of cash acquired 会社買収および売却	—	1,998	—	—	—	—	—	—	—	—
Increase in leasehold deposits 施設借用保証金の増加	5	(527)	1,456	(538)	506	592	312	221	161	(9)
Proceeds from sales of property, plant and equipment 有形固定資産の売却による収入	1,335	1,895	1,081	1,953	1,450	1,641	4,808	4,343	1,981	17,930
Acquisition of minority interests 少数株主持分の買収	—	(186)	(447)	(182)	(111)	(101)	(1,738)	(515)	(200)	(15)
Decrease (increase) in investment in and loans to affiliates 関連会社に対する投資および貸付金の減少(増加)	—	—	—	—	—	—	—	(1,233)	251	(1,189)
Proceeds from sale of business entities, net 事業の売却(現金流出額との純額)	—	—	—	—	—	1,450	(365)	(1,111)	(544)	—
Payment for acquisition of business entities, net 事業の買収(現金取得額との純額)	—	—	—	—	—	(410)	337	(776)	(9,645)	(18,638)
Other — net その他	(2,933)	—	—	—	—	—	—	—	—	—
Net cash used in investing activities 投資活動における資金収支合計	(17,631)	(29,011)	(34,180)	(32,365)	(40,121)	(30,633)	(34,484)	(36,050)	(43,020)	(47,075)
Free cash Flow 純現金収支	14,455	572	25,746	18,431	(6,434)	11,221	46,203	25,026	8,679	(6,536)
FINANCING ACTIVITIES : 財務活動における資金収支										
Net borrowings (repayments) of short-term bank loans 短期借入金(返済)	(2,864)	15,515	(18,087)	(1,371)	5,786	2,909	(4,842)	(3,860)	(11,813)	13,812
Proceeds from issuance of long-term debt and warrants 長期債務の増加及び新株引受権の発行	648	25,413	775	715	13,102	10,358	1,011	1,924	318	242
Repayments of long-term debt 長期債務の返済	(18,013)	(8,956)	(3,102)	(1,650)	(26,970)	(1,960)	(13,093)	(30,238)	(11,012)	(455)
Proceeds from issuance of common stock pursuant to exercise of warrants 新株引受権の行使による株式の発行	—	—	—	—	—	—	—	—	—	—
Dividends paid 支払配当金	(3,408)	(3,372)	(3,371)	(3,337)	(3,267)	(3,085)	(2,942)	(5,670)	(6,218)	(7,689)
Share buyback 消却のための自己株式の取得	—	(6,971)	—	(18,338)	—	—	—	—	—	—
Treasury stock 自己株式の取得	—	—	—	(749)	(725)	(10,218)	(8,411)	(2,954)	(10,075)	(11,204)
Disposal of treasury stock 自己株式の処分	—	—	—	—	—	—	—	19	3	3
Exercise of stock options ストックオプションの行使	—	—	—	148	18	—	158	95	477	594
Net cash provided by (used in) financing activities 財務活動における資金収支合計	(23,637)	21,629	(23,785)	(24,582)	(12,056)	(1,996)	(28,119)	(40,684)	(38,320)	(4,697)
EFFECT OF EXCHANGE RATE CHANGES ON CASH AND CASH EQUIVALENTS 換算レート変動の影響	(1,741)	(1,666)	(2,191)	3,102	3,648	(85)	(2,944)	1,218	1,307	1,943
NET INCREASE (DECREASE) IN CASH AND CASH EQUIVALENTS 資金収支合計	(10,923)	20,535	(230)	(3,049)	(14,842)	9,140	15,140	(14,440)	(28,334)	(9,290)
CASH AND CASH EQUIVALENTS AT BEGINNING OF THE YEAR 期首現金及び現金同等物残高	79,288	68,365	88,900	88,670	85,621	70,779	79,919	95,059	80,619	52,285
CASH AND CASH EQUIVALENTS AT END OF THE YEAR 期末現金及び現金同等物残高	68,365	88,900	88,670	85,621	70,779	79,919	95,059	80,619	52,285	42,995

Main Products 主要製品

Industrial Automation Business

Manufacturing and sales of control systems and equipment for factory automation and production machinery
Sensing Devices (Photoelectric/Proximity Sensors, AOI, etc.), Control Devices (Programmable Logic Controllers, Relays, Timers, etc.)
Safety Devices (Safety sensors, Safety switches, etc.)

Electronic Components Business

Manufacturing and sales of electronic components for home appliances, communications, mobile phones, amusement components, OA
Relays, Switches, Connectors, Sensors, Micro Lens Arrays, Custom ICs, IC Coins, Optical Communications Devices, etc.

Automotive Electronic Components Business

Manufacturing and sales of automotive electronic components
Automotive Relays, Sensors, Laser Radars, Power Window Switches, Keyless Entry Systems, ECU, etc.

Social Systems Business

Manufacturing and sales of equipment/modules, and provision of solutions and services in the fields of public transportation and traffic/road management
Public Transportation : Passenger Gates, Ticket Vending machines, etc. Traffic/Road Management : Signal Controllers, Road Management Systems, etc.

Healthcare Business

Manufacturing and sales of home and professional healthcare equipment
Digital Blood Pressure Monitors, Digital Thermometers, Pedometers, Body Composition Analyzers (Body-fat Analyzers), Electronic Pulse Massagers, Vital signs monitors, Inpatient blood pressure monitoring devices, Exhaled gas monitors, Central monitors, Vascular screening devices, etc.

Others

Business Development Group Develops new businesses for achieving the Group growth strategy.
Entertainment Business(Commercial Game Machines (Photo Sticker Machines), Cellular Phone Content Distribution, Prizes for Commercial Game Machines (Prize Business), etc.), Personal Computer Peripherals(Broadband Routers, Uninterruptible Power Supplies, etc.), Remote Monitoring Service Business (Remote Monitoring Equipment), RFID Business(IC tag, Reader/Writer, Antennae, etc.)

Note: As of October 1, 2004, the ATM and other information equipment business that had been included in the Social Systems Business was transferred to a new company, Hitachi-Omron Terminal Solutions Corp., under a joint venture between Omron and Hitachi Ltd.

インダストリアル オートメーションビジネス

工場自動化用、産業機器用の制御システム・機器の製造・販売
センシング機器（光電・近接センサ、基板検査装置など）、コントロール機器（PLC、温度調節器、リレー、タイマなど）、セーフティ機器（セーフティセンサ、セーフティスイッチなど）

エレクトロニクス コンポーネンツビジネス

家電、通信機器、携帯電話、アミューズメント機器、OA機器向けの電子部品の製造・販売
リレー、スイッチ、コネクタ、センサー、マイクロレンズ・アレイ、カスタムIC、ICコイン、光通信デバイスなど

オートモーティブエレクトロニック コンポーネンツビジネス

自動車搭載用電子部品の製造・販売
車載用リレー、センサー、レーザーレーダー、パワーウィンドースイッチ、キーレスリモートスイッチ、ECUなど

ソーシャルシステムズ ビジネス

駅務・交通分野への機器/モジュールの製造・販売およびソリューション/サービスの提供
自動改札機、券売機、精算機などの駅務機器、信号制御、道路管制機器などの交通機器など

ヘルスケアビジネス

家庭用および医療用健康機器の製造・販売
電子血圧計、電子体温計、ネブライザー、歩数計、体組成計（体脂肪計）、低周波治療器、生体情報モニター、血圧監視装置、呼気ガスモニター、セントラルモニター、動脈硬化検査装置など

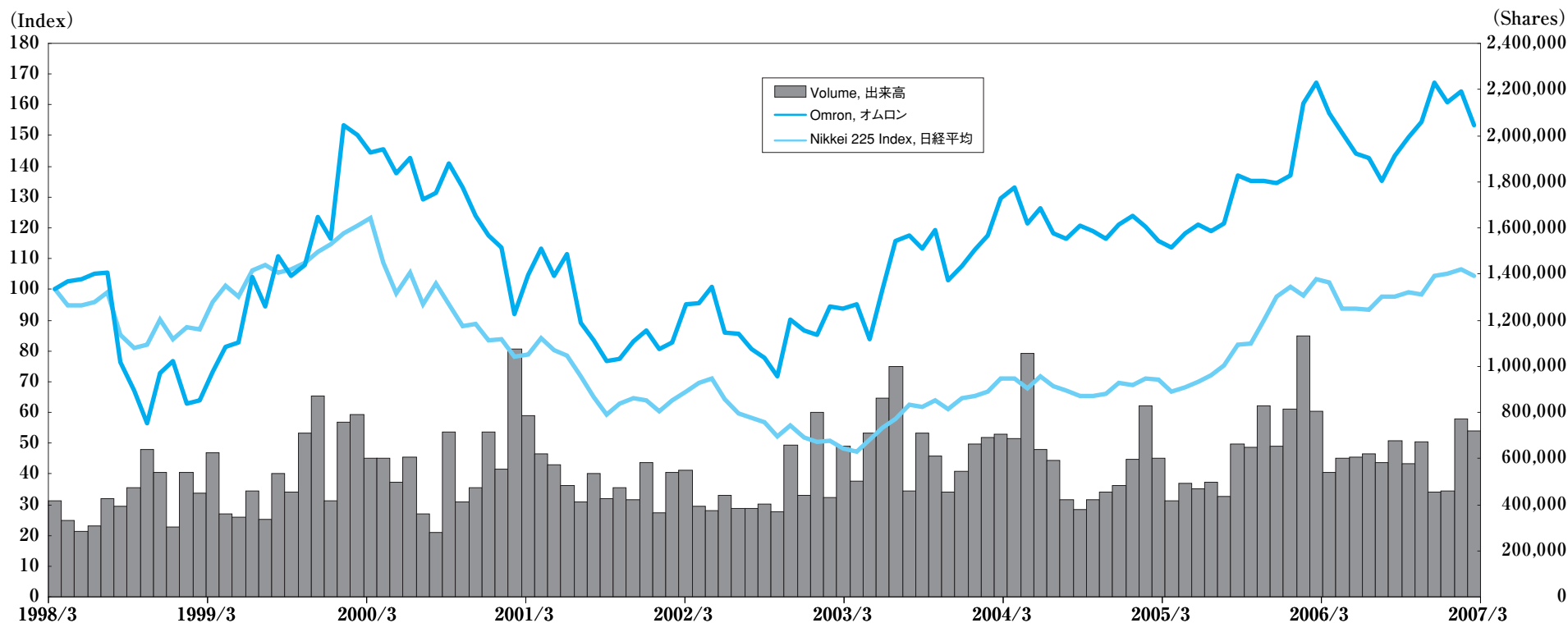
その他

事業開発本部 グループ成長戦略の実現に向けた新規事業の育成・推進
エンタテインメント事業（業務用ゲーム機（プリントシール機）、モバイルコンテンツ、業務ゲーム機用景品（プライズ事業）など）、パソコン用周辺機器事業（ブロードバンドルータ、バックアップ電源など）、遠隔監視サービス事業（絶縁監視機器など）、RFID事業（ICタグ、リーダライタ、アンテナなど）

(注) 当社は、ソーシャルシステムズビジネスに属するATMなどの情報機器事業を2004年10月1日に株式会社日立製作所との共同会社分割により独立した新会社（日立オムロンターミナルソリューションズ株式会社）に承継しました。

Common Stock Price Range (Osaka Securities Exchange)

株価推移 (大阪証券取引所)



Note1 : Share Index (1998/3E=100)

Note2 : The volume is average of 1 month

注1 : オムロンと日経平均の値は、1998年3月末日のデータを100とする。

注2 : 出来高は1ヵ月間の平均出来高

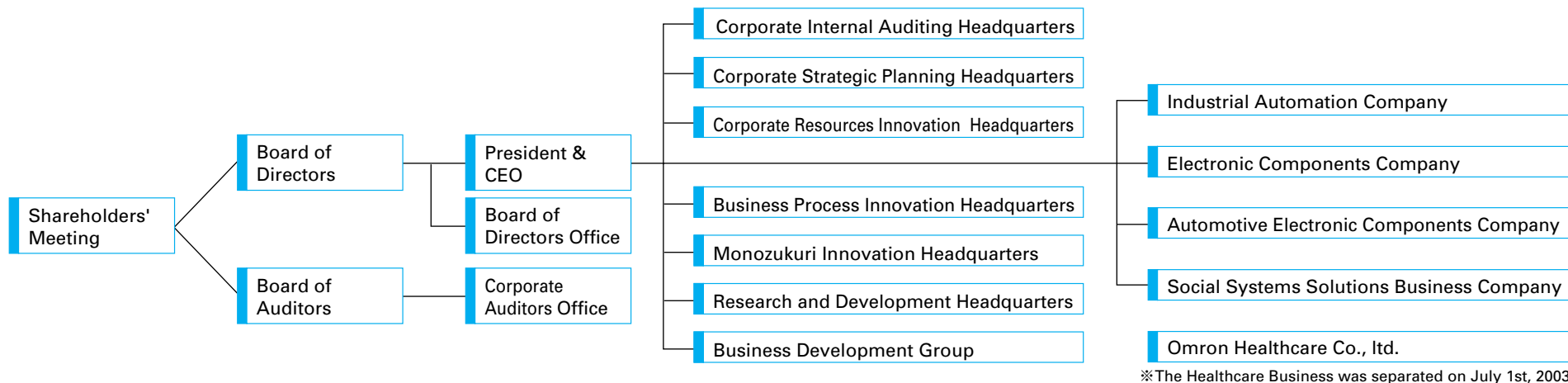
Yearly High and Low Prices 年間株価高値・安値

		1998	1999	2000	2001	2002	2003	2004	2005	2006	2007
高値 (High)	(¥)	2,810	2,220	3,360	3,180	2,515	2,080	2,740	2,880	3,520	3,570
安値 (Low)	(¥)	1,790	1,070	1,501	1,745	1,395	1,341	1,658	2,220	2,230	2,625

* 大阪証券取引所 終値ベース (Closing price of Osaka Securities Exchange)

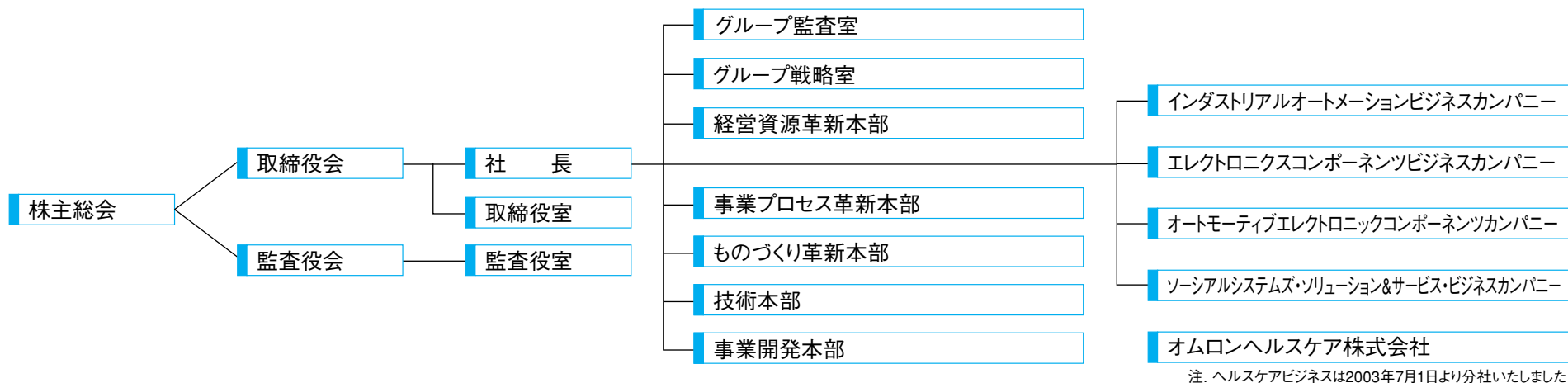
OMRON Corporate Organization Chart 組織図

Basic Information



※From March 21, 2007

概要



※2007年3月21日付

Corporate Data (As of March 31, 2007) 会社概要 (2007年3月31日現在)

Company Name	OMRON Corporation	社名	オムロン株式会社
Head Office	Shiokoji Horikawa, Simogyo-ku Kyoto 600-8530, Japan Phone: +81-75-344-7000 Fax : +81-75-344-7001	本社	〒600-8530 京都市下京区塩小路通堀川東入ル 電話番号 (075) 344-7000 FAX番号 (075) 344-7001
Tokyo Head Office	3-4-10, Toranomom, Minato-ku Tokyo 105-0001, Japan Phone: +81-3-3436-7170 Fax : +81-3-3436-7180 Home Page Address http://www.omron.co.jp (Japanese) http://www.omron.com (English)	東京本社	〒105-0001 東京都港区虎ノ門3-4-10 電話番号 (03) 3436-7170 FAX番号 (03) 3436-7180 ホームページアドレス http://www.omron.co.jp (日本語) http://www.omron.com (英語)
Date of Establishment	May 10, 1933	創業日	1933年5月10日
Industrial Property Rights	Number of patents: 2,350 (Japan) 2,481 (Overseas) Number of patents pending: 3,778 (Japan) 2,236 (Overseas)	工業所有権	特許保有権利数 2,350 件 (日本) 2,481 件 (海外) 出願中特許数 3,778 件 (日本) 2,236 件 (海外)
Number of Employees	32,456	従業員数	32,456 名
Paid-in Capital	¥ 64,100 million	払込資本金	641億円
Common Stock	Authorized: 487,000,000 shares Issued : 249,121,372 shares Number of shareholders: 29,190	普通株式	授權株式数 487,000,000 株 発行済株式数 249,121,372 株 株主数 29,190 名
Stock Listings	Osaka Securities Exchange Tokyo Stock Exchange Nagoya Stock Exchange Frankfurt Stock Exchange	上場証券取引所	大阪証券取引所 東京証券取引所 名古屋証券取引所 フランクフルト証券取引所

OMRON

オムロン株式会社

〒600-8530 京都市下京区塩小路堀川東入ル
TEL:075-344-7000 FAX:075-344-7001
URL:<http://www.omron.co.jp>

OMRON Corporation

Shiokoji Horikawa, Shimogyo-ku, Kyoto,
600-8530, Japan
TEL : +81-75-344-7000 FAX : +81-75-344-7001
URL:<http://www.omron.com>