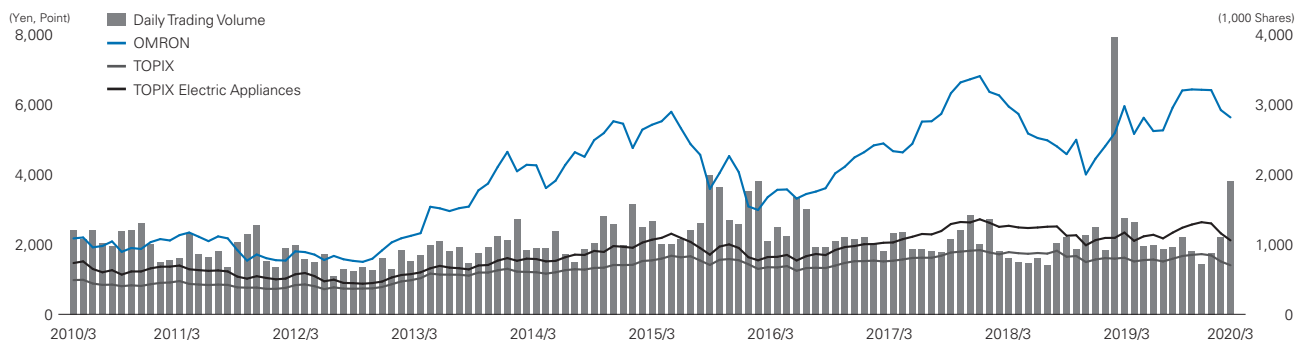


# Stock Information

## Share Price and Volume



† OMRON share prices prior to July 16, 2013 reflect prices on the First Section of the Osaka Securities Exchange. Share prices on July 16, 2013 and later reflect prices on the First Section of the Tokyo Stock Exchange.

## Total Shareholder Return (TSR\*1)

FY	2015	2016	2017	2018	2019
OMRON	63.1%	92.6%	119.4%	101.0%	110.9%
TOPIX	89.2%	102.3%	118.5%	112.5%	101.8%
TOPIX Electric Appliances	78.4%	99.5%	123.7%	110.4%	108.9%

\*1 Represents total investment return to shareholders, combining capital gains and dividends.  
 The calculation of this figure is a required disclosure under Cabinet Office Ordinance.  
 † This figure reflects period-end value for fiscal years beginning with fiscal 2015, assuming an investment at the fiscal 2014 year-end closing price.

## 52-Week High / Low, Volatility\*2

FY	High (¥)	Low (¥)	Volatility (%)
2019	6,870	4,410	32.3
2018	6,300	3,740	34.5
2017	7,670	4,385	27.1
2016	5,120	3,045	32.5
2015	5,900	2,742	40.0
2014	5,800	3,365	30.9
2013	4,730	2,213	39.7
2012	2,478	1,436	29.9
2011	2,357	1,381	36.5
2010	2,418	1,749	34.7

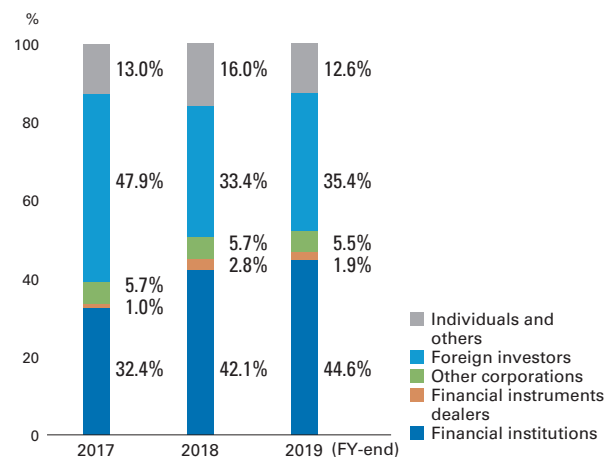
\*2 Volatility: Price fluctuation risk expressed in standard deviations

## Dividends per Share / Payout Ratio

FY	Dividends per Share (¥)	Payout Ratio (%)
2019	84	23.0
2018	84	32.2
2017	76	25.6
2016	68	31.6
2015	68	31.1
2014	71	25.0
2013	53	25.3
2012	37 <sup>*3</sup>	27.0
2011	28	37.6
2010	30	24.7

\*3 Including ¥5.0 per share of 80th anniversary memorial dividend

## Ownership and Distribution of Shares



## Shareholder Distribution by Number of Shares Held (Trading unit: 100 shares)

