






OMRON DIGITAL Co., Ltd.

Company Overview

<div>Established</div> <div>April 8, 1976</div>	<div>Employees (as of April 2025)</div> <div>500</div>
<div>Capital</div> <div>JPY 360 million</div>	<div>Sales (as of March 2025)</div> <div>17.8 billions of yen</div>
<div>Head Office</div> <div>53 Kunotsubo,Terado-cho, Muko-shi, Kyoto 617-0002, Japan</div>	

Directors / Audit & Supervisory Board Members			
President and CEO Hiroyuki Inoue		Executive Director (part-time) Seiji Takeda	
		Executive Director (part-time) Hidetaka Ishihara	
Executive Director (part-time) Toyoharu Tamoi		Auditor (part-time) Isao Yamanaka	

Executive Officer	
Ken Tsutsui	

Base

Head Office

53 Kunotsubo,Terado-cho, Muko-shi, Kyoto 617-0002, Japan

Yasu Office

686-1,Ichimiya,Yasu-City Shiga 520-2362, JAPAN

Kusatsu Office

2-2-1,Nishikusatsu,Kusatsu-City Shiga 525-0035, JAPAN

Shinagawa Office

Shinagawa Front Building 7F, 2-3-13, Konan, Minato-ku, Tokyo 108-0075, Japan

Osaka Office

8FUrban Ace Higashitenma Bldg. 1-1-19, Higashitenma, Kita-ku, Osaka-City Osaka 530-0044, JAPAN

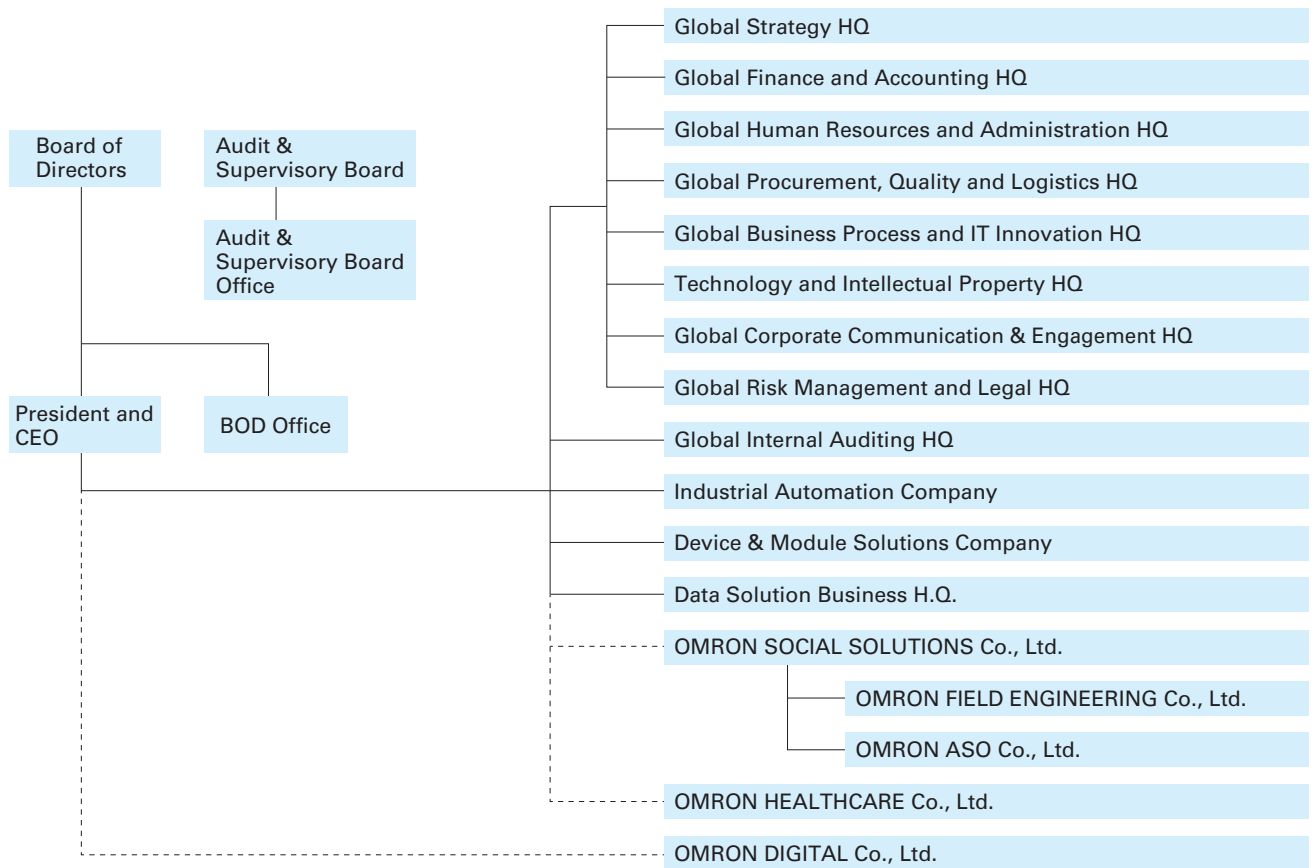
Owariasahi Office

1 Ikegami, Haruoka-cho, Owariasahi-shi, Aichi, 488-8501 Japan
Located within the premises of Hitachi Channel Solutions, Corp.



Main base ●

OMRON Corporation Organizational Chart (as of October 1, 2025)



OMRON DIGITAL Co., Ltd. Organizational Chart (as of October 1, 2025)

