

Corporate Information As of March 31, 2019

Established

May 10, 1933

Incorporated

May 19, 1948

Capital

¥64,100 million

Number of Employees

(Consolidated)

35,090

Common Stock

Issued

213,958 thousand shares

Trading Unit

100 shares

Number of Shareholders

41,489

Stock Listings

Tokyo Stock Exchange,

Frankfurt Stock Exchange

Securities Code

6645

Fiscal Year-End

March 31

Annual Shareholders' Meeting

June

Custodian of Register of

Shareholders

Mitsubishi UFJ Trust and

Banking Corporation

Depositary and Transfer

Agent for American

Depositary Receipts

JPMorgan Chase Bank, N.A.

Head Office

Shiokoji Horikawa,

Shimogyo-ku, Kyoto

600-8530, Japan

Tel : +81-75-344-7000

Fax: +81-75-344-7001

Major Manufacturing & Development, Sales & Marketing, and Research & Development Centers in Japan

Manufacturing & Development

Kusatsu Office

Okayama Office

Ayabe Office

Yasu Office

Research & Development

Keihanna Technology

Innovation Center

Sales & Marketing

Tokyo Office

Osaka Office

Nagoya Office

Mishima Office

Subsidiaries and Affiliates

OMRON Automotive Electronics Co., Ltd.

OMRON SOCIAL SOLUTIONS Co., Ltd.

OMRON HEALTHCARE Co., Ltd.

OMRON RELAY & DEVICES Co., Ltd.

OMRON SWITCH & DEVICES Co., Ltd.

OMRON AMUSEMENT CO., Ltd

OMRON FIELD ENGINEERING Co., Ltd.

OMRON SOFTWARE Co., Ltd.

OMRON ASO Co., Ltd.

OMRON EXPERTLINK Co., Ltd.

Overseas Headquarters

North America

OMRON MANAGEMENT

CENTER OF AMERICA

(United States of America, Illinois)

Brazil

OMRON MANAGEMENT

CENTER OF BRAZIL

(São Paulo)

Europe

OMRON MANAGEMENT

CENTER OF EUROPE

(The Netherlands, North Holland)

Greater China

OMRON MANAGEMENT

CENTER OF CHINA

(Shanghai)

Asia Pacific

OMRON MANAGEMENT

CENTER OF ASIA PACIFIC

(Singapore)

India

OMRON MANAGEMENT

CENTER OF INDIA

(Gurgaon)

Korea

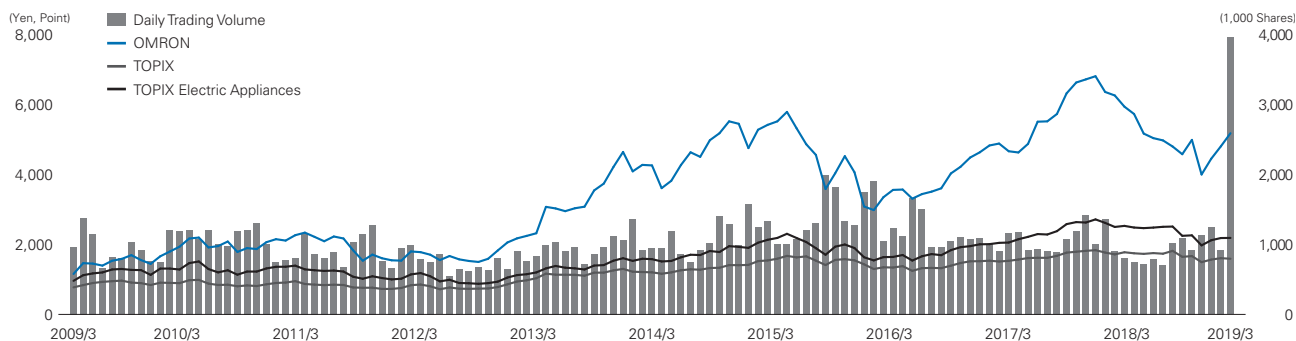
OMRON MANAGEMENT

CENTER OF KOREA

(Seoul)

Stock Information

Share Price and Volume



† OMRON share prices prior to July 16, 2013 reflect prices on the First Section of the Osaka Securities Exchange. Share prices on July 16, 2013 and later reflect prices on the First Section of the Tokyo Stock Exchange.

Total Shareholder Return (TSR*1)

FY	2014	2015	2016	2017	2018
OMRON	128.9%	81.9%	119.5%	153.6%	130.2%
TOPIX	130.7%	116.5%	133.7%	154.9%	147.1%
TOPIX Electric Appliances	137.0%	107.4%	136.4%	169.6%	151.3%

*1 Represents total investment return to shareholders, combining capital gains and dividends. The calculation of this figure is now a required disclosure under Cabinet Office Ordinance.

† This figure reflects period-end value for fiscal years beginning with fiscal 2014, assuming an investment at the fiscal 2013 year-end closing price.

52-Week High / Low, Volatility*2

FY	High (¥)	Low (¥)	Volatility (%)
2018	6,300	3,740	34.5
2017	7,670	4,385	27.1
2016	5,120	3,045	32.5
2015	5,900	2,742	40.0
2014	5,800	3,365	30.9
2013	4,730	2,213	39.7
2012	2,478	1,436	29.9
2011	2,357	1,381	36.5
2010	2,418	1,749	34.7
2009	2,215	1,132	35.9

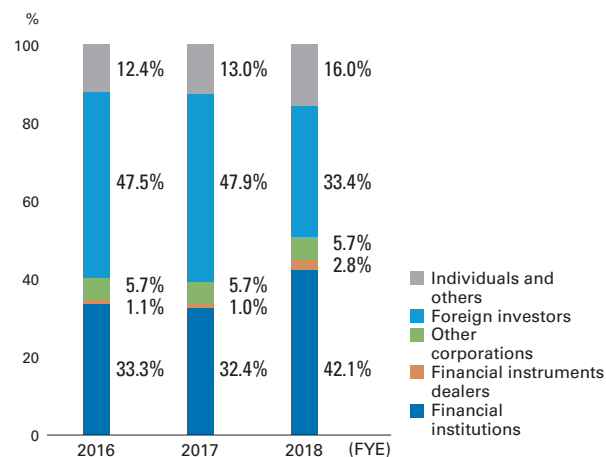
*2 Volatility: Price fluctuation risk expressed in standard deviations

Dividends per Share / Payout Ratio

FY	Dividends per Share (¥)	Payout Ratio (%)
2018	84	32.2
2017	76	25.6
2016	68	31.6
2015	68	31.1
2014	71	25.0
2013	53	25.3
2012	37*3	27.0
2011	28	37.6
2010	30	24.7
2009	17	106.4

*3 Including ¥5.0 per share of 80th anniversary memorial dividend

Ownership and Distribution of Shares



Shareholder Distribution by Number of Shares Held (Trading unit: 100 shares)

