

CORPORATE AND STOCK INFORMATION

As of March 31, 2007

Head Office

Shiokoji Horikawa, Shimogyo-ku,
Kyoto 600-8530, Japan
Phone: 81-75-344-7000
Fax: 81-75-344-7001

Tokyo Head Office

3-4-10, Toranomon, Minato-ku,
Tokyo 105-0001, Japan
Phone: 81-3-3436-7170
Fax: 81-3-3436-7180

Date of Establishment

May 10, 1933

Industrial Property Rights

Number of patents:

2,350 (Japan)

2,481 (Overseas)

Number of patents pending:

3,778 (Japan)

2,236 (Overseas)

Number of Employees (Consolidated)

32,456

Paid-in Capital

¥64,100 million

Common Stock

Authorized: 487,000,000 shares

Issued: 249,121,372 shares

Number of shareholders: 29,190

Stock Listings

Osaka Securities Exchange

Tokyo Stock Exchange

Nagoya Stock Exchange

Frankfurt Stock Exchange

Ticker Symbol Number

6645

Custodian of Register of Shareholders

Mitsubishi UFJ Trust and Banking
Corporation

1-4-5, Marunouchi, Chiyoda-ku,
Tokyo 100-8212, Japan

Depository and Transfer Agent for American Depository Receipts

JPMorgan Chase Bank, N. A.

4 New York Plaza, New York,
NY 10004, U. S. A.

ADR Holder Contact:

JPMorgan Service Center

P. O. Box 3408

South Hackensack, NJ 07606-3408

TEL : 1-800-990-1135

FAX : 1-201-680-4604

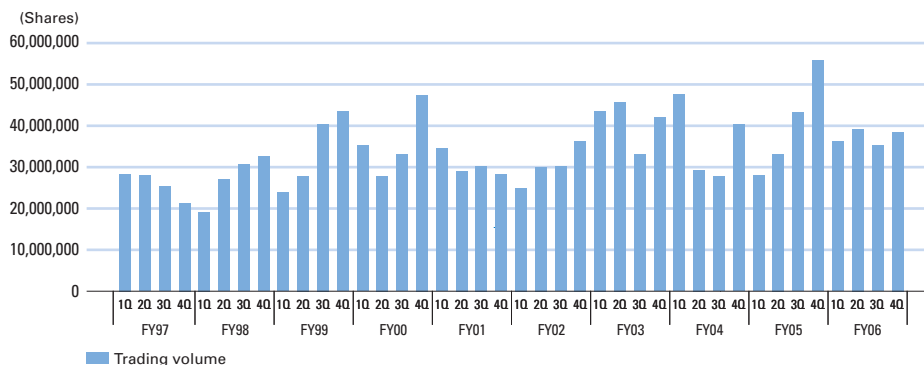
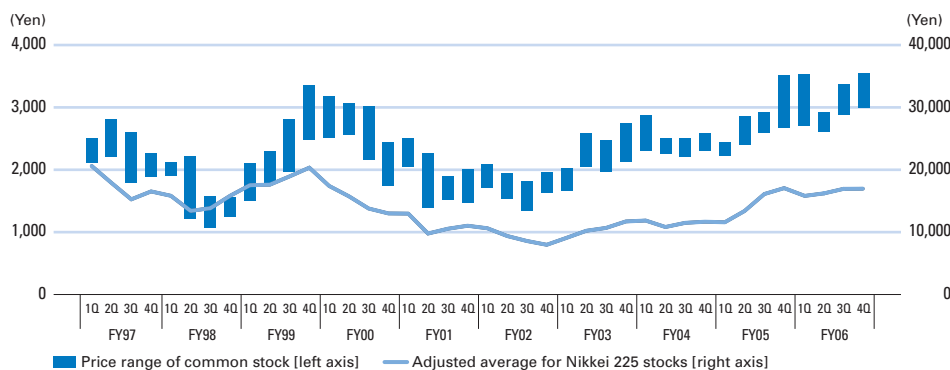
General E-mail : adr@jpmorgan.com

Homepage

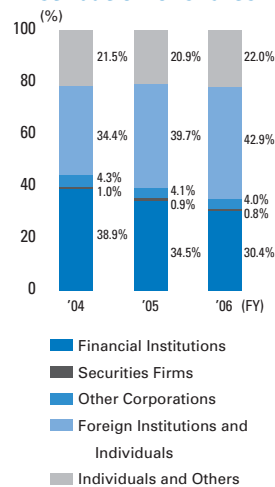
<http://www.omron.co.jp> (Japanese)

<http://www.omron.com> (English)

Common Stock Price Range/ Trading Volume (Osaka Securities Exchange)



Ownership and Distribution of shares



Yearly High and Low Prices

	FY1997	FY1998	FY1999	FY2000	FY2001	FY2002	FY2003	FY2004	FY2005	FY2006
High	¥ 2,810	¥ 2,220	¥ 3,360	¥ 3,180	¥ 2,515	¥ 2,080	¥ 2,740	¥ 2,880	¥ 3,520	¥ 3,570
Low	1,790	1,070	1,501	1,745	1,395	1,341	1,658	2,220	2,230	2,625

* Closing price of Osaka Securities Exchange