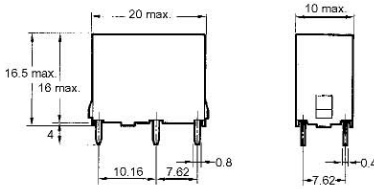


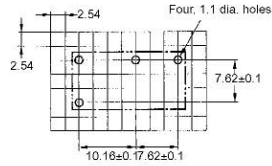
# Dimensions

Note: All units are in millimeters unless otherwise indicated.

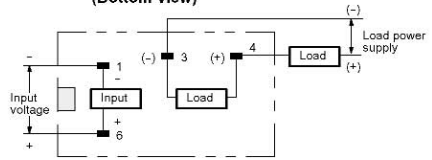
## G3S/G3SD



### PCB Dimensions (Bottom View)

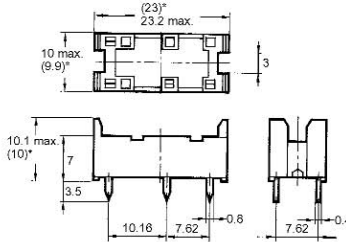


### Terminal Arrangement/ Internal Connections (Bottom View)



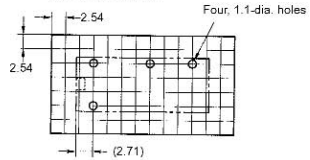
Note: Values in parentheses apply to the DC-load versions.

## Connecting Socket P6B-04P

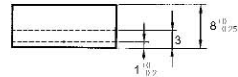
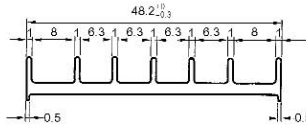
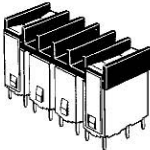


\*Average value

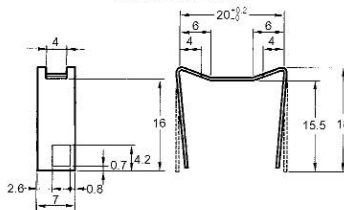
### PCB Dimensions (Bottom View)



## Heat Sink Y92B-S08N



### Mounting Bracket



### PCB Dimensions (Bottom View)

