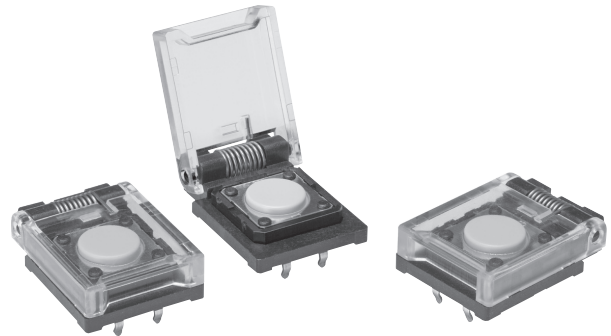


Security oriented Tactile Switch by the protective cover.

- Protect cover promises no switch operation without any intentions.
- Protect cover returned to "close" position by spring.

RoHS Compliant



Ordering Information

■ List of Model

Type	Model
Tactile Switch with protective cover	B3F-8000 (N)

Note: The Switches are packed in boxes. The minimum order unit is 200 Switches per box. Order in multiples of the packing quantity.

Specifications

■ Operating Characteristics

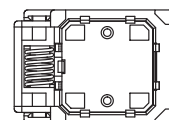
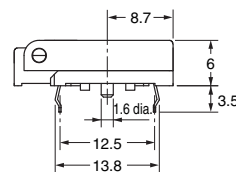
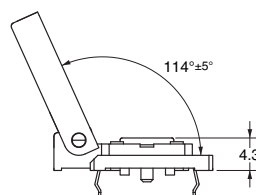
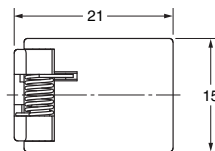
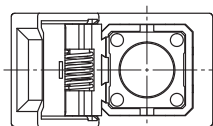
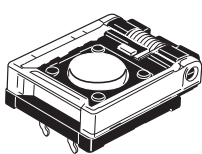
Item	B3F-8000 (N)
Operating force (OF)	1.27±0.49 N {130±50 gf}
Releasing force (RF)	0.29 N {30 gf} min.
Pretravel (PT)	0.3 $^{+0.2}_{-0.1}$ mm

■ Ratings/Characteristics

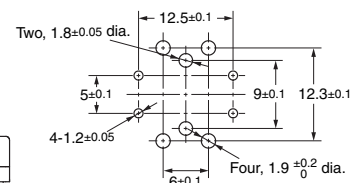
Electrical rating	1 to 50 mA, 5 to 24 VDC (resistive load)
Ambient temperature	-25°C to +70°C at 60%RH max. (with no icing or condensation)
Ambient humidity	35% to 85% RH (at 5 to 35 °C)
Contact form	SPST-NO
Contact resistance	100 mΩ max. (initial value) (rated: 1 mA, 5 VDC)
Insulation resistance	100 MΩ max. (at 250 VDC)
Dielectric strength	500 VAC, 50/60Hz for 1 min
Bounce time	5 ms max.
Vibration resistance	10 to 55 Hz, 1.5 mm double amplitude
Shock resistance	Destruction: 1,000 m/s ² max. Malfunction: 100 m/s ² max.
Durability	Switch; 3,000,000 operations Min., Cover; 5,000 operations Min.

Dimensions

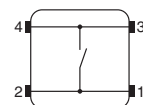
B3F-8000 (N)



PCB Mounting (Top View) (Recommended board thickness t=1.6)



Terminal Arrangement/ Internal Connections (Top View)



Note: Unless otherwise specified, a tolerance of ± 0.5 mm applies to all dimensions.

Precautions

Be sure to read the safety precautions common to all Tactile Switches for correct use.

ALL DIMENSIONS SHOWN ARE IN MILLIMETERS.

To convert millimeters into inches, multiply by 0.03937. To convert grams into ounces, multiply by 0.03527.