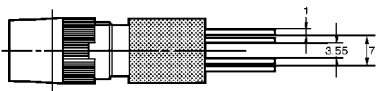
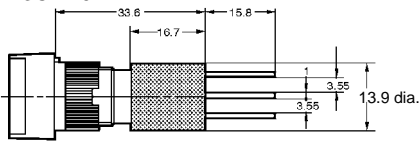


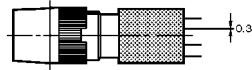
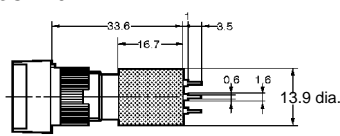
### ■ Accessory Mounting Dimensions Dimensions with Socket Mounted

The diagrams below show the external dimensions for rectangular models as representative models.

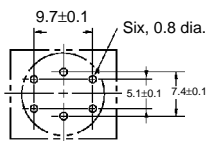
**Wire-wrap Terminal  
A3C-4101**



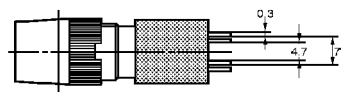
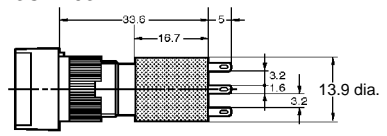
**PCB Terminal  
A3C-4102**



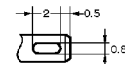
**PCB Cutout (bottom view)**



**Solder Terminal  
A3C-4103**

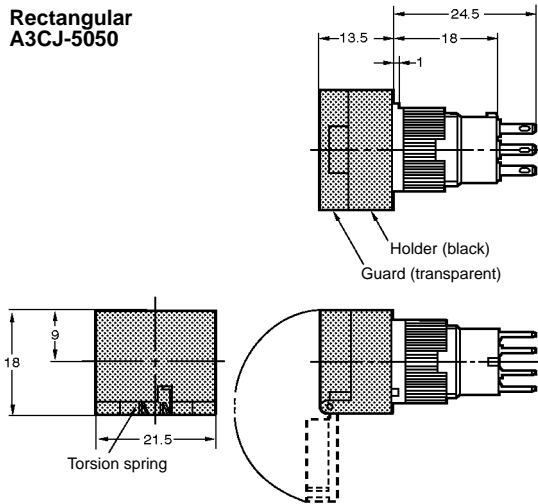


**Terminal Hole Dimensions**

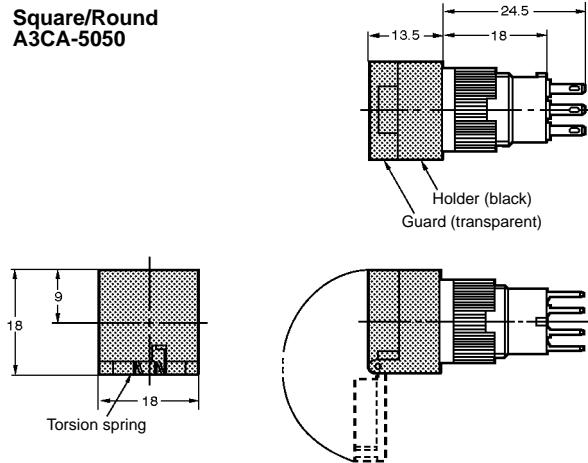


### Switch Guard

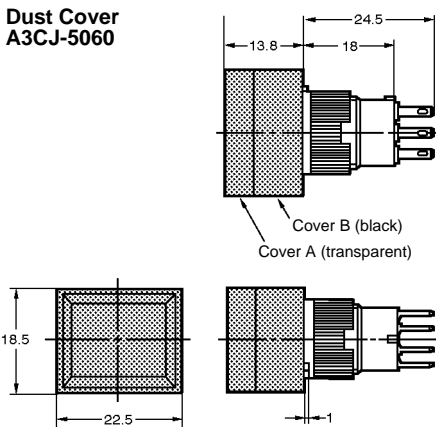
**Rectangular  
A3CJ-5050**



**Square/Round  
A3CA-5050**

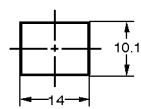


**Dust Cover  
A3CJ-5060**

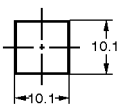


**Legend Plate**

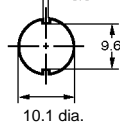
**Rectangular**



**Square**



**Round**



- Note:**
1. The thickness is 0.8 mm.
  2. Since the Legend Plate is made of polycarbonate, use alcohol-based paints such as melanin, phthalic acid, or acryl paint when marking the legend.

**Insulation Cover  
A3C-3002**

